

Surface Water Distribution System Improvements Project Pre-Bid Conference

City of Turlock



// Mandatory pre-bid conference

- The pre-bid conference is mandatory and a bidder who fails to attend a pre-bid conference may be disqualified from bidding
- Attendees will be recorded now and at the end of the pre-bid conference
- Contractor attendance record - name of attendee(s) and company
 - Read through registered list
 - Any others?

// Agenda

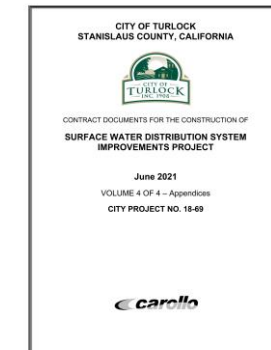
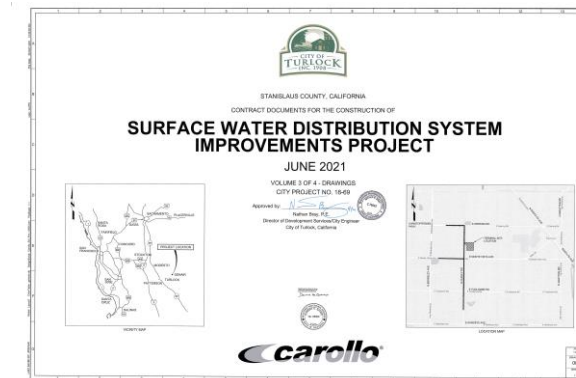
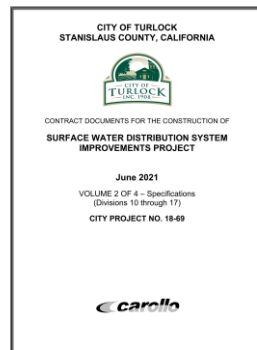
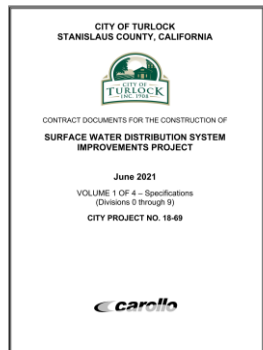
- Introductions
- Bid Period Information
- Project Overview
- Key Bid Documents and Contract Requirements
- Site visit of areas not publicly accessible

// Introductions

- Owner – City of Turlock
- Design Engineer – Carollo Engineers
- Construction Manager – TBD
 - City in the process of selecting

// Project contract documents

- Issuing Office: City of Turlock, Development Services Department, Engineering Division, 156 South Broadway, Suite 150, Turlock, CA 95380
- Complete set w/ full size drawings: \$420
- Complete set w/ half size drawings: \$116
- Download: www.cityofturlock.org/capitalprojects/



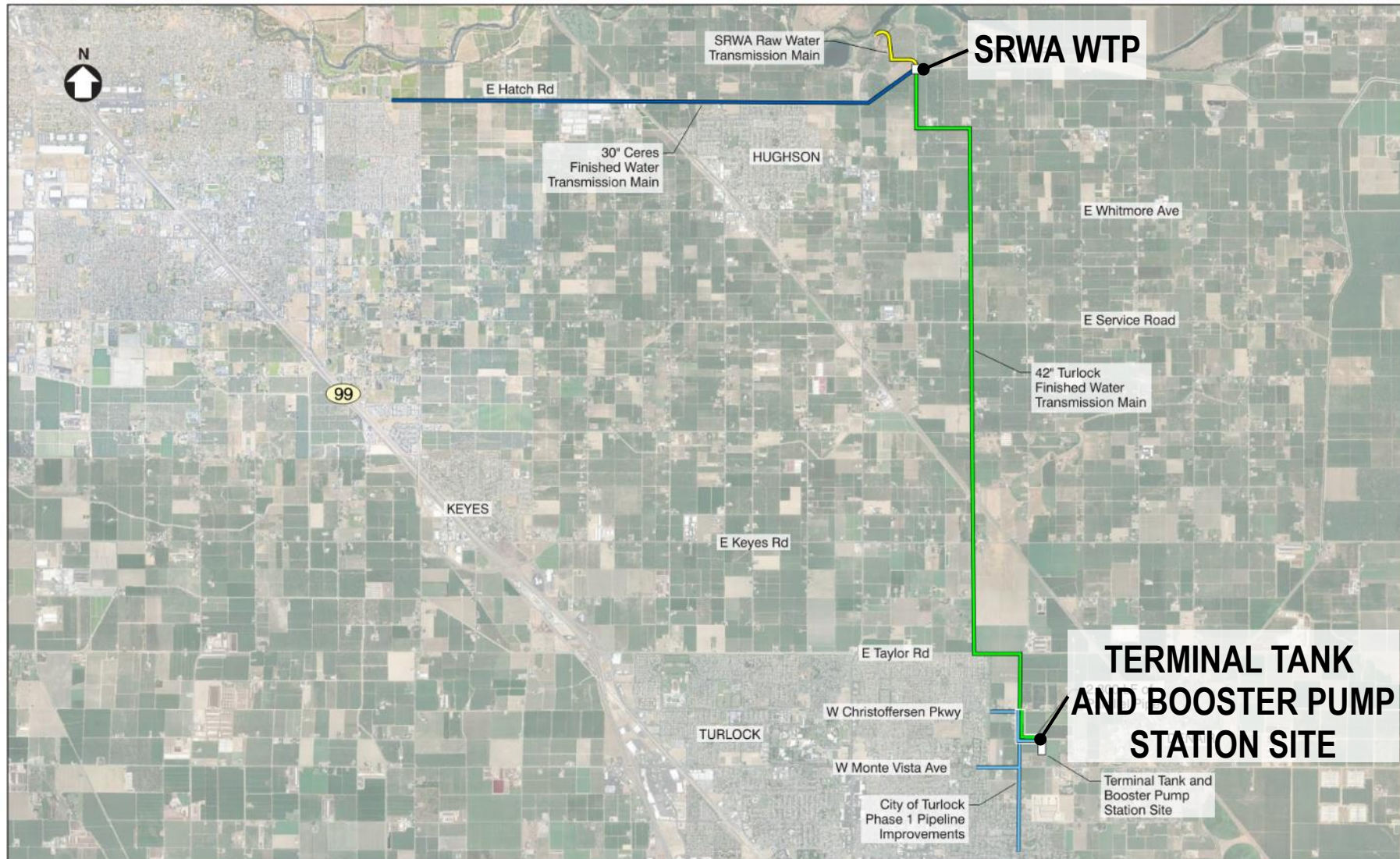
// Questions during bidding

- Procedural:
 - Stephen Fremming, City of Turlock
 - (209) 668-5417 sfremming@turlock.ca.us
- Technical, in writing, to **both**:
 - Darren Baune: dbaune@carollo.com
 - Jon Marshall: jpmarshall@carollo.com
- Verbal statements may not be relied upon. Written Q&A will be transmitted to all prospective bidders
- Cut-off for Questions:
 - No later than 2 PM, seven (7) days prior to Bid Opening date

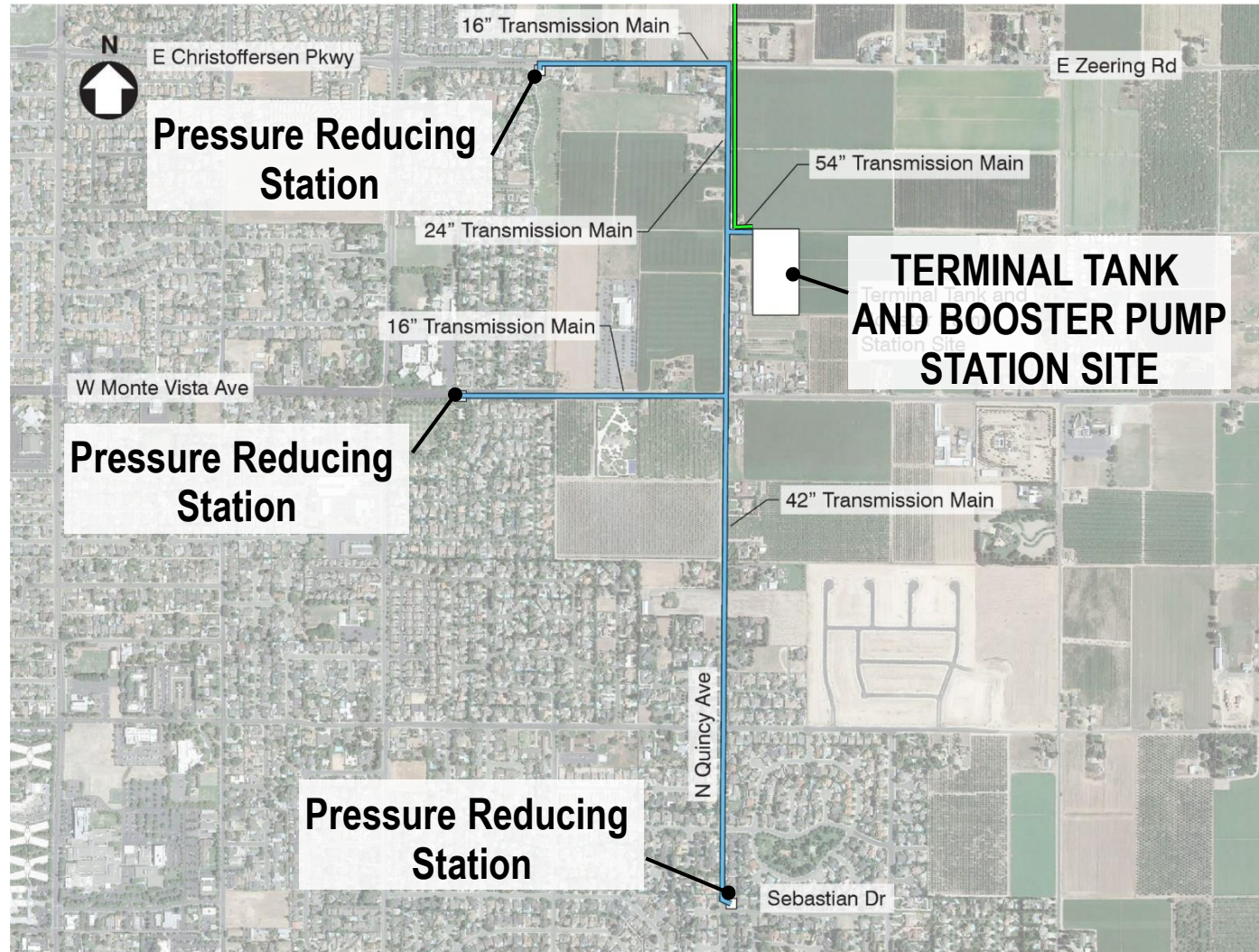
// Bidding and award schedule

- Bid Opening
 - July 15, 2021 @ 2:00 PM local time
 - City of Turlock, Office of City Engineer
- Bids Valid
 - Subject to acceptance for 90 days
- Award / Notice to Proceed
 - Approximate dates provided for convenience – not contractual
 - August 10, 2021 - Anticipated City Council Award
 - September 10, 2021 - NTP
- Engineers Estimate: \$37,300,000

// Stanislaus Regional Water Authority (SRWA) project overview



// Surface Water Distribution System Improvements project overview

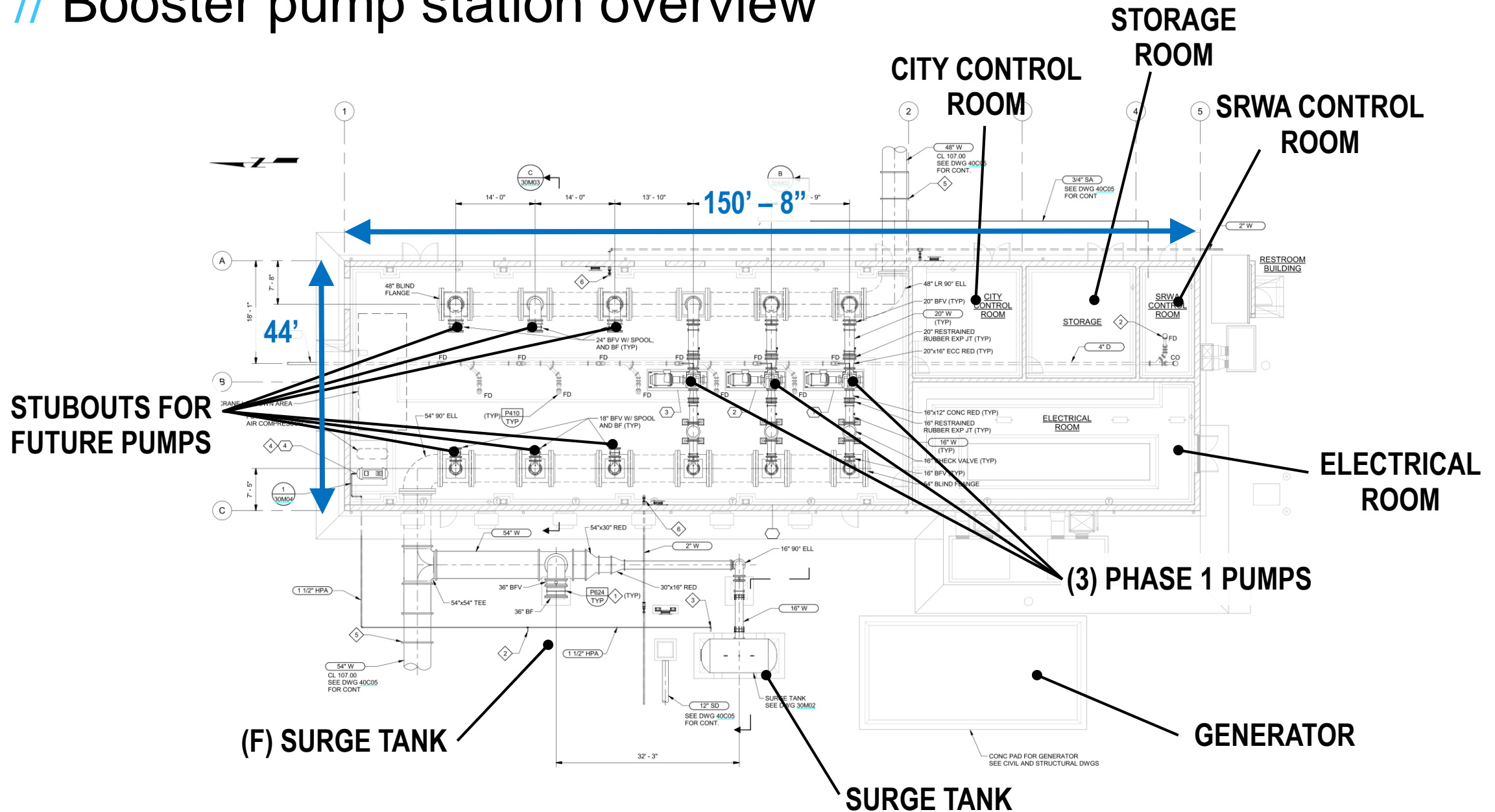


tur0521r1-11380.ai

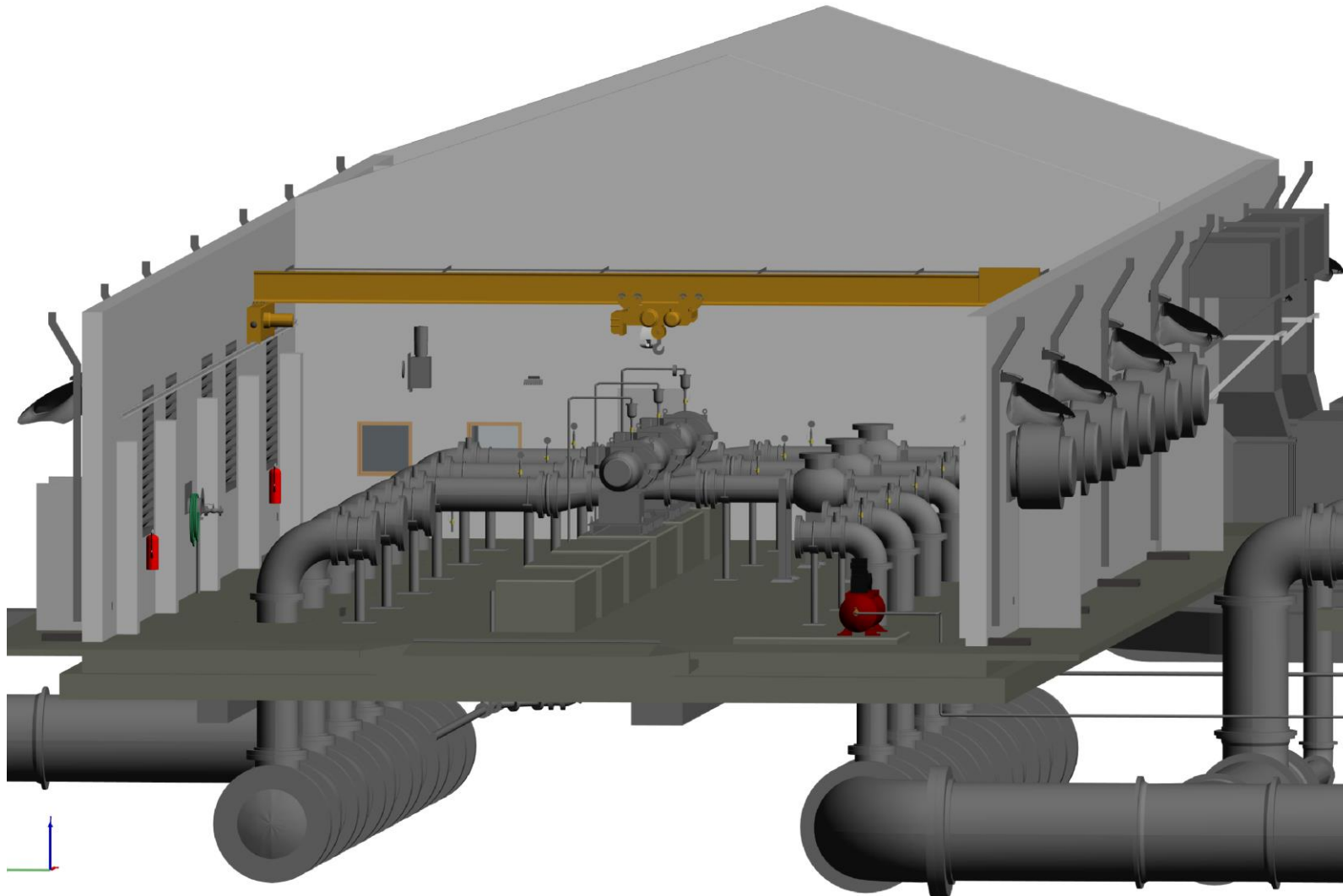
Filename.ppt/10



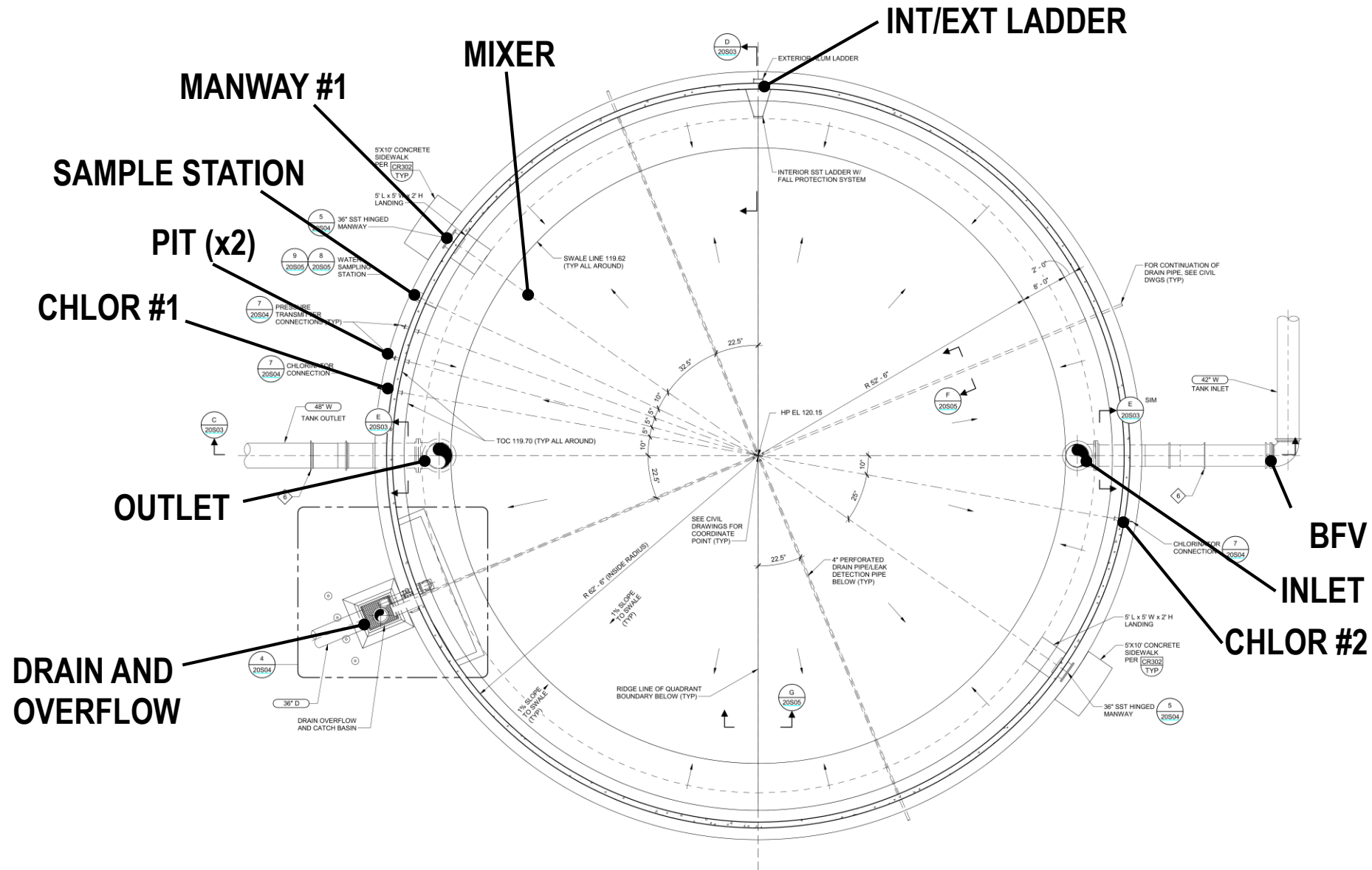
// Booster pump station overview



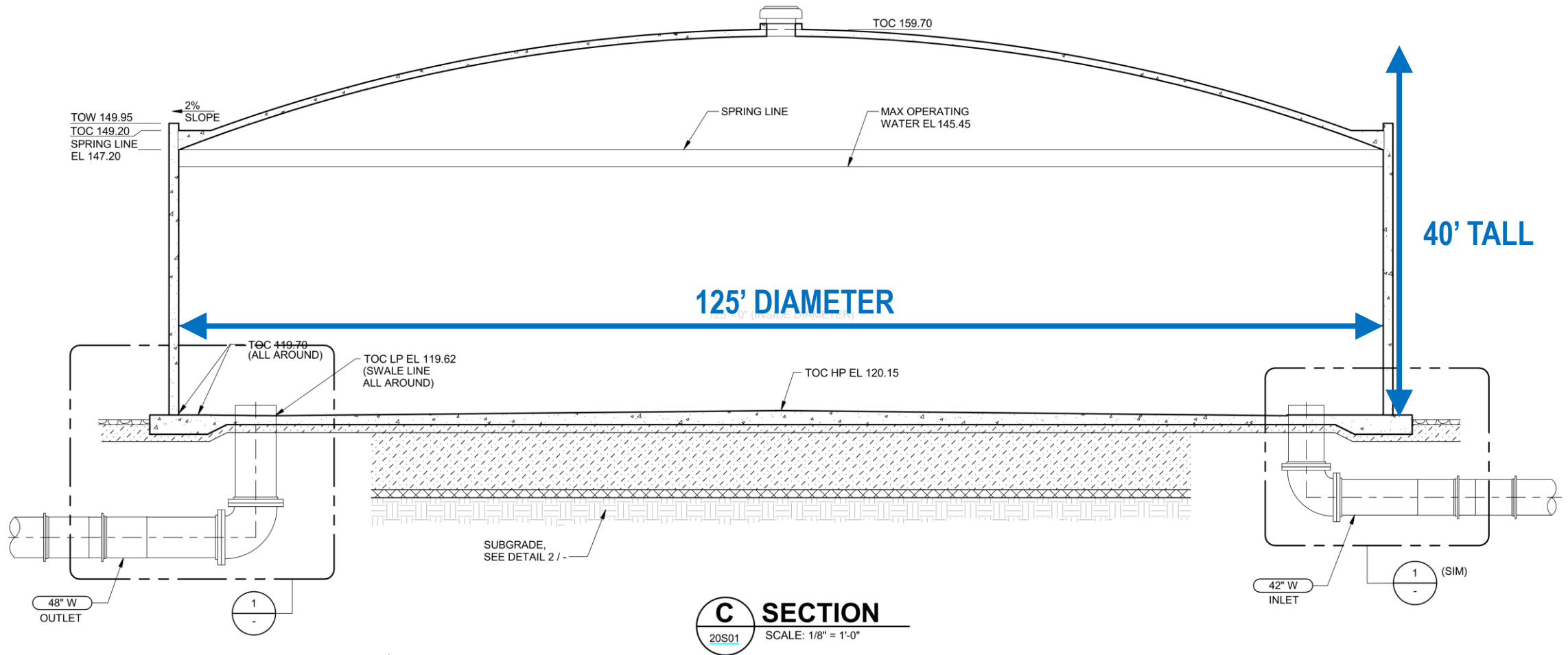
// Pump station 3D walk through



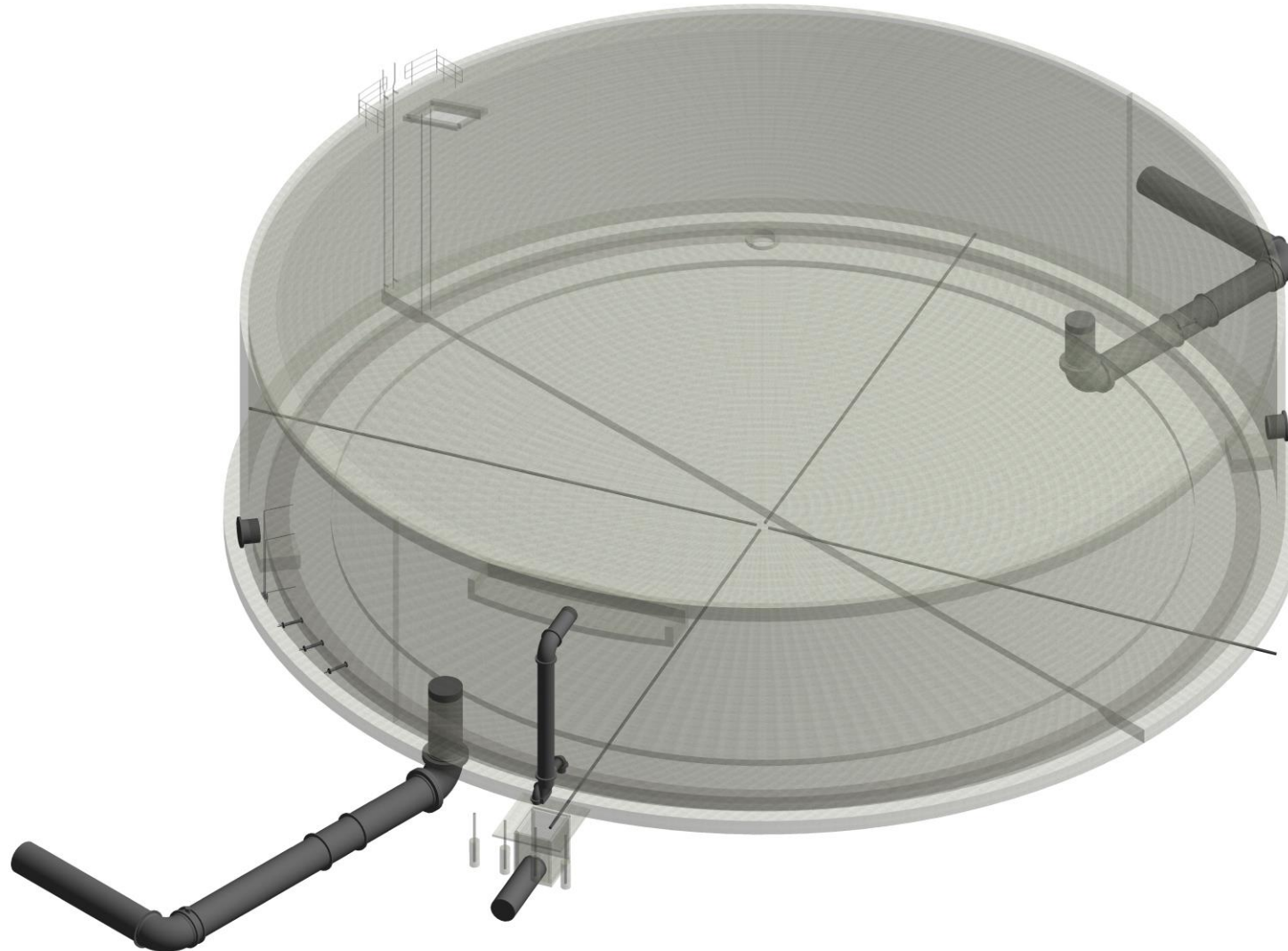
// Terminal tank overview



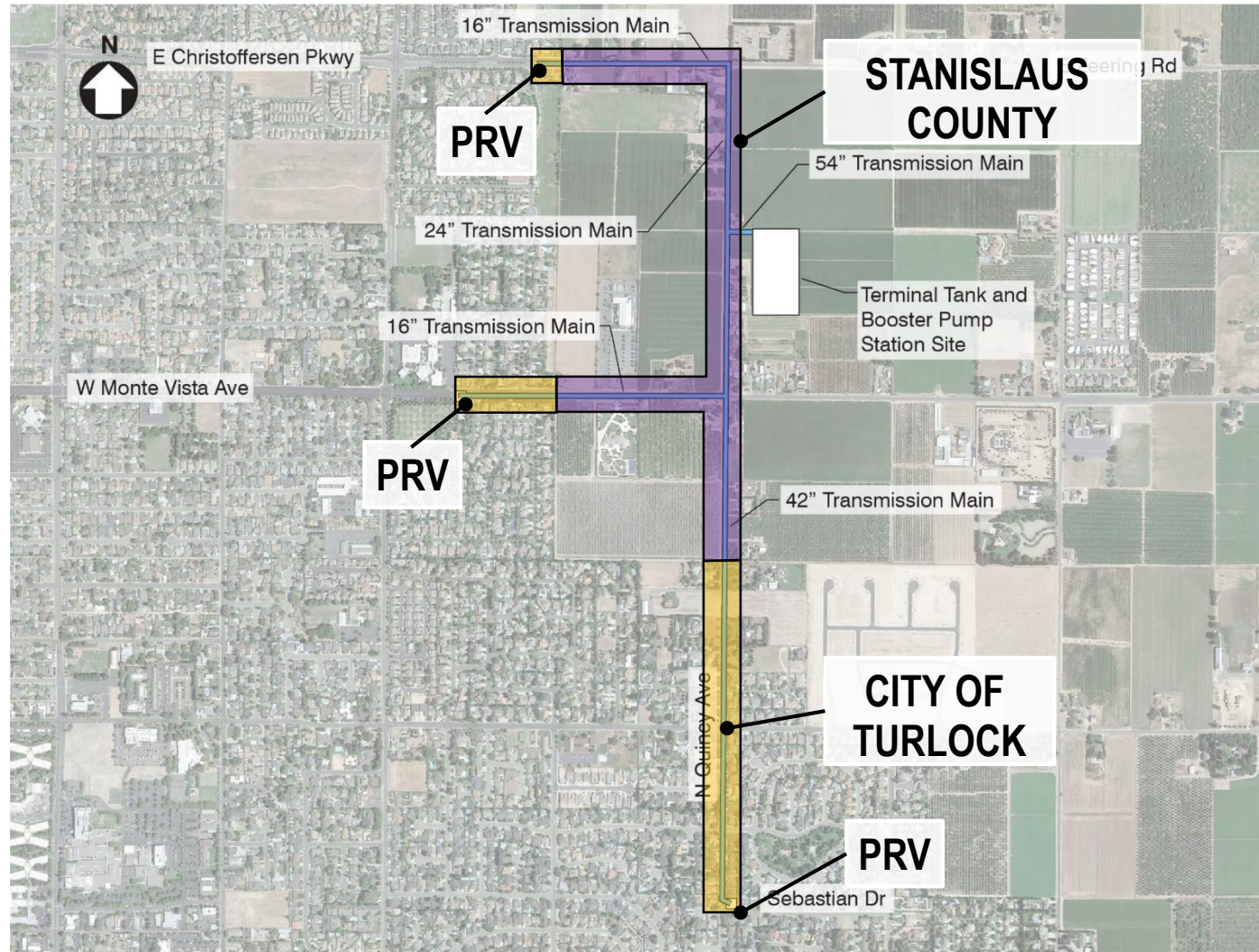
// Terminal tank overview



// Terminal tank 3D walk through

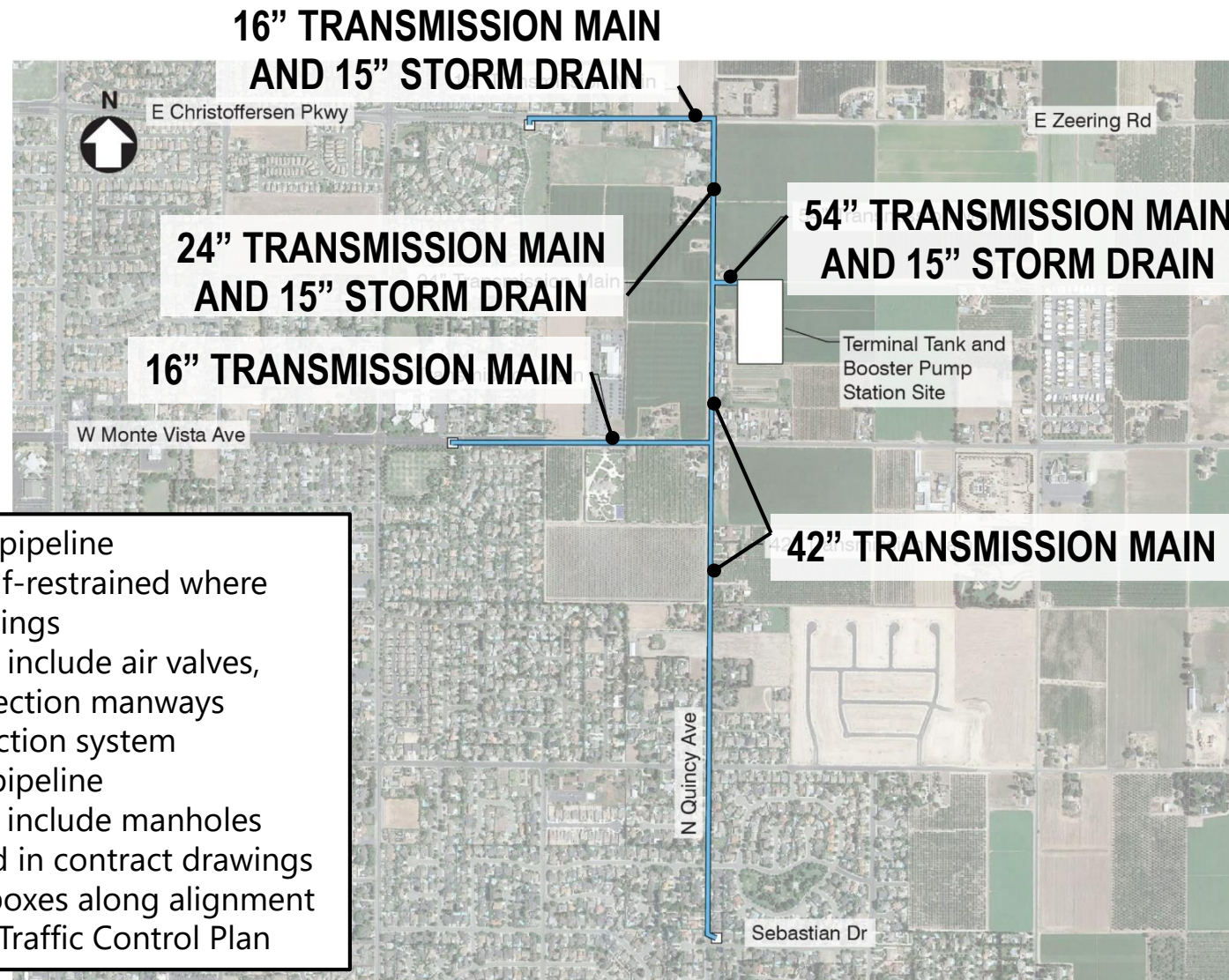


// Offsite pipeline alignment overview



tur0521r1-11380.ai

// Offsite pipeline alignment overview

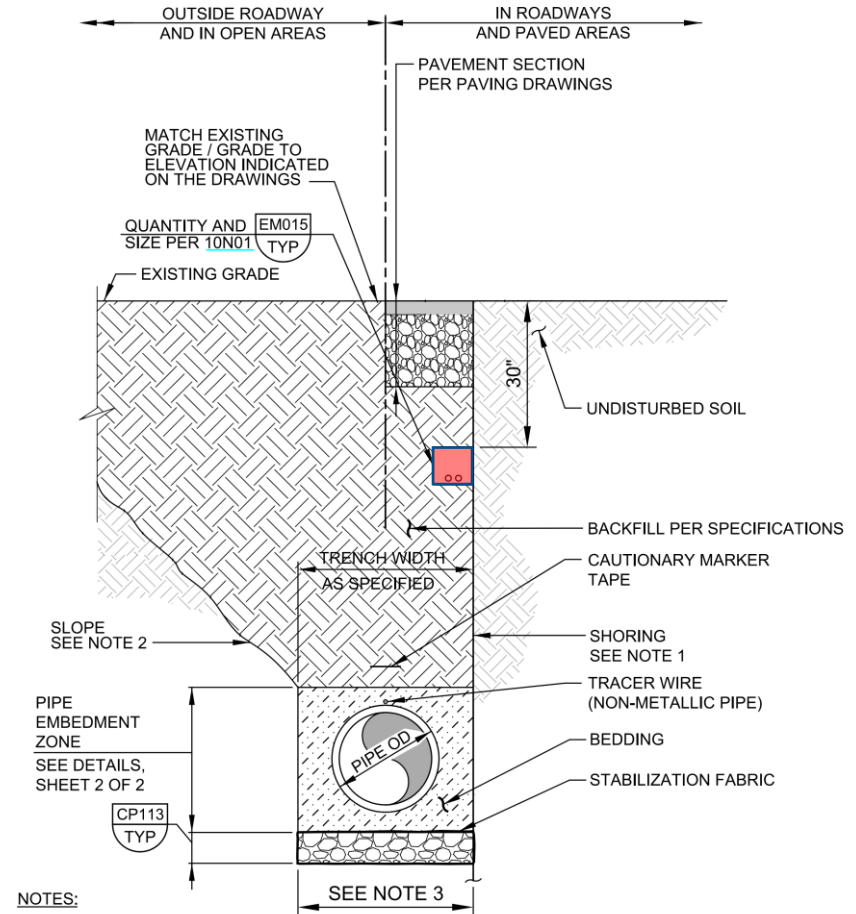


- 16-54-inch diameter pipeline
 - Ductile Iron, self-restrained where shown on drawings
 - Appurtenances include air valves, blow-offs, inspection manways
 - Cathodic protection system
- 15-inch storm drain pipeline
 - Appurtenances include manholes
- Paving plans included in contract drawings
- Fiber optic and pull boxes along alignment
- Contractor develops Traffic Control Plan

// Offsite pipeline alignment overview



A FIBER OPTIC PLAN
FILE: 11380810N101

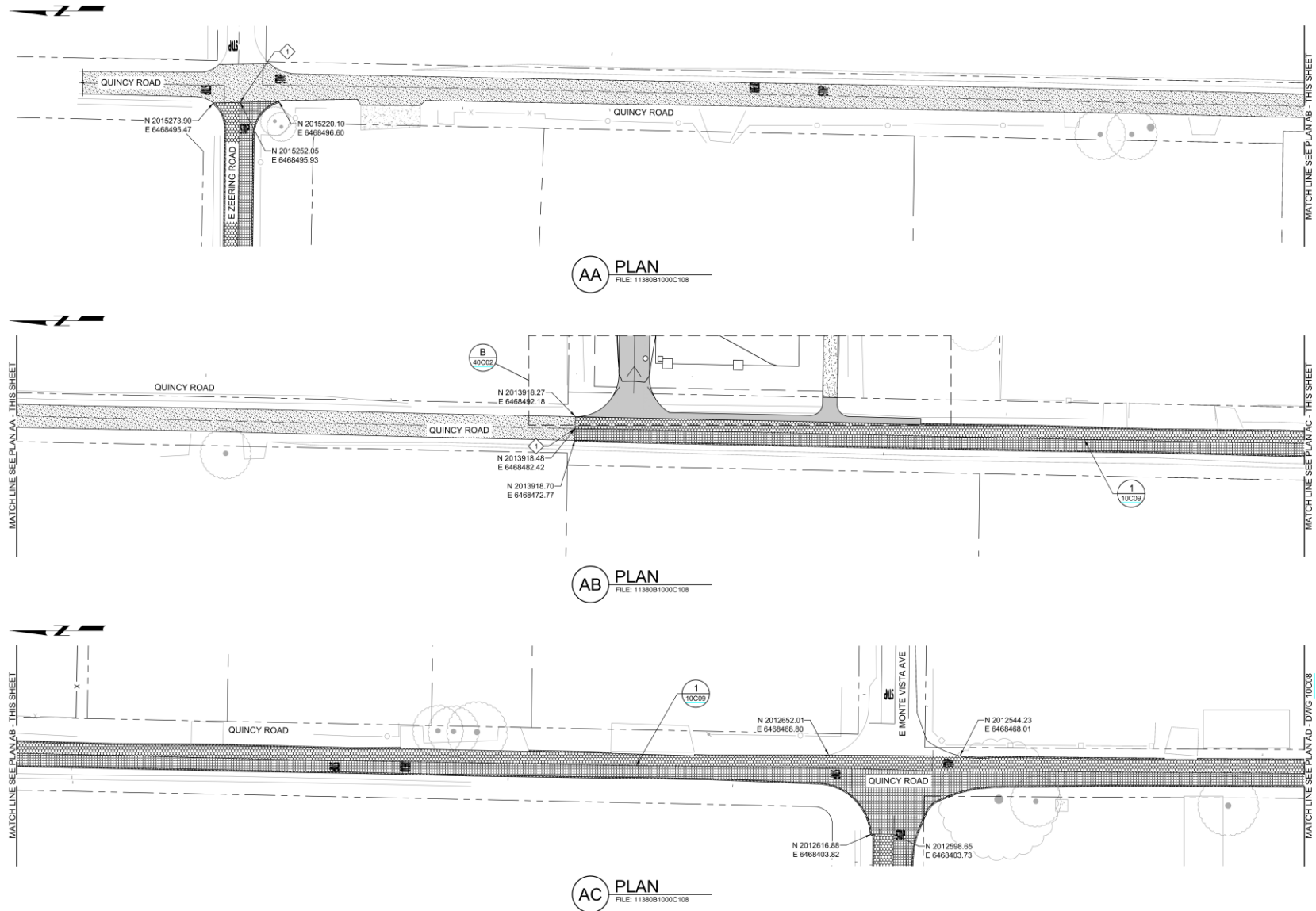


NOTES:

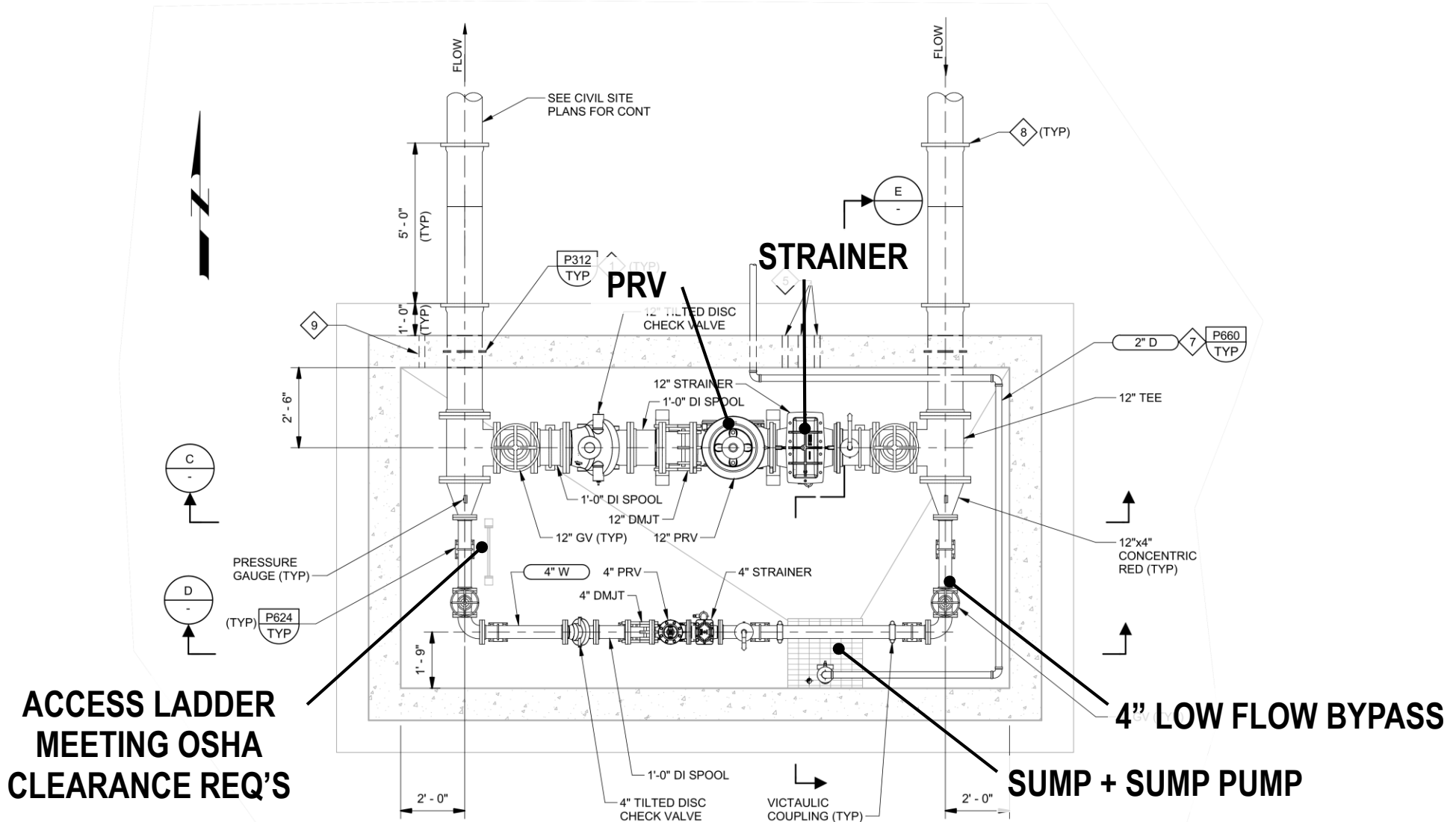
1. SEE SPECIFICATION SECTION 02318 FOR SHORING REQUIREMENTS.
2. SEE SPECIFICATION SECTION 02318 FOR SLOPE REQUIREMENTS.
3. SEE SPECIFICATION SECTION 02318 FOR DEPTH AND WIDTH REQUIREMENTS.

CP111 PIPE TRENCH
TYP

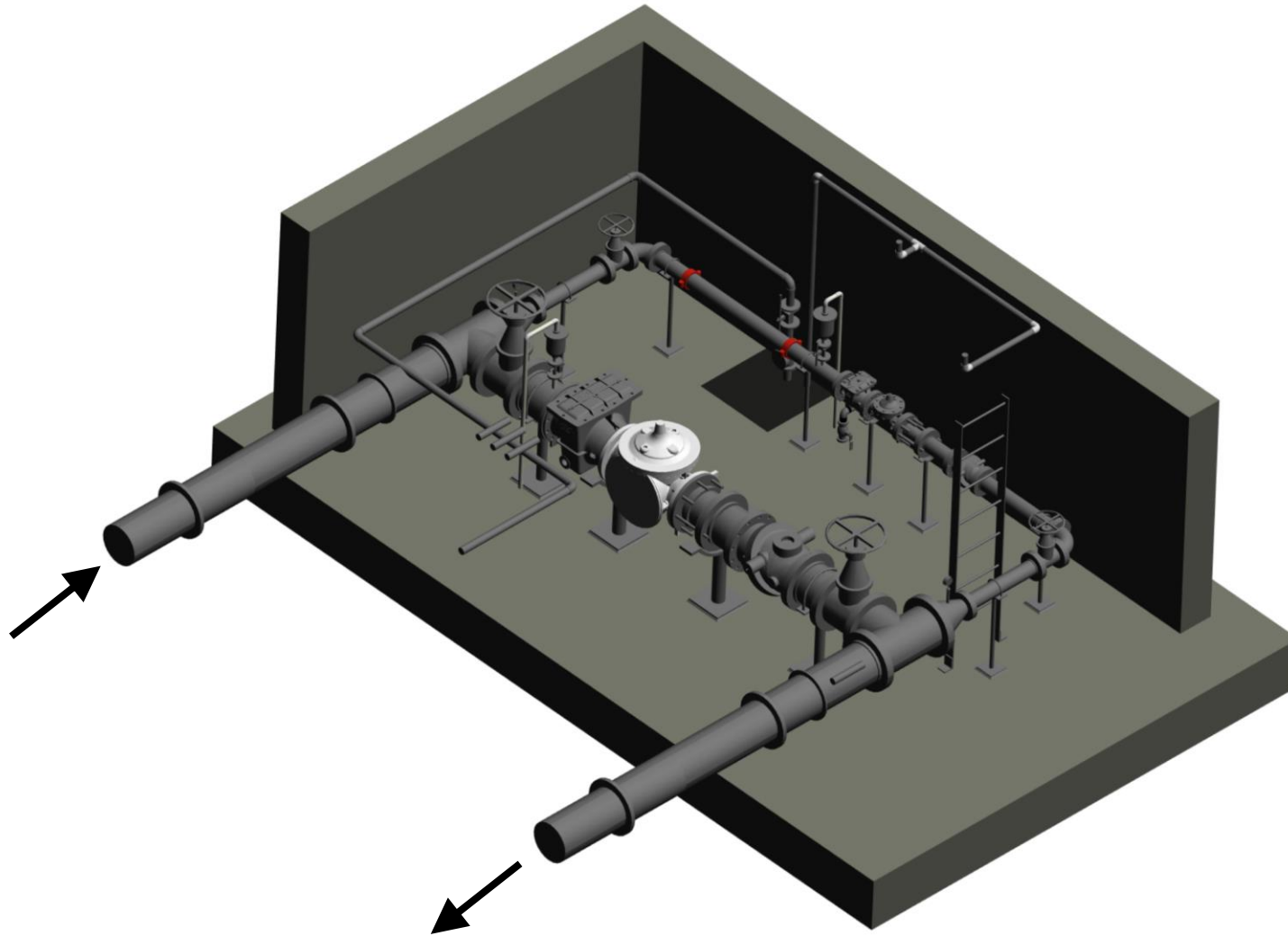
// Offsite pipeline alignment overview



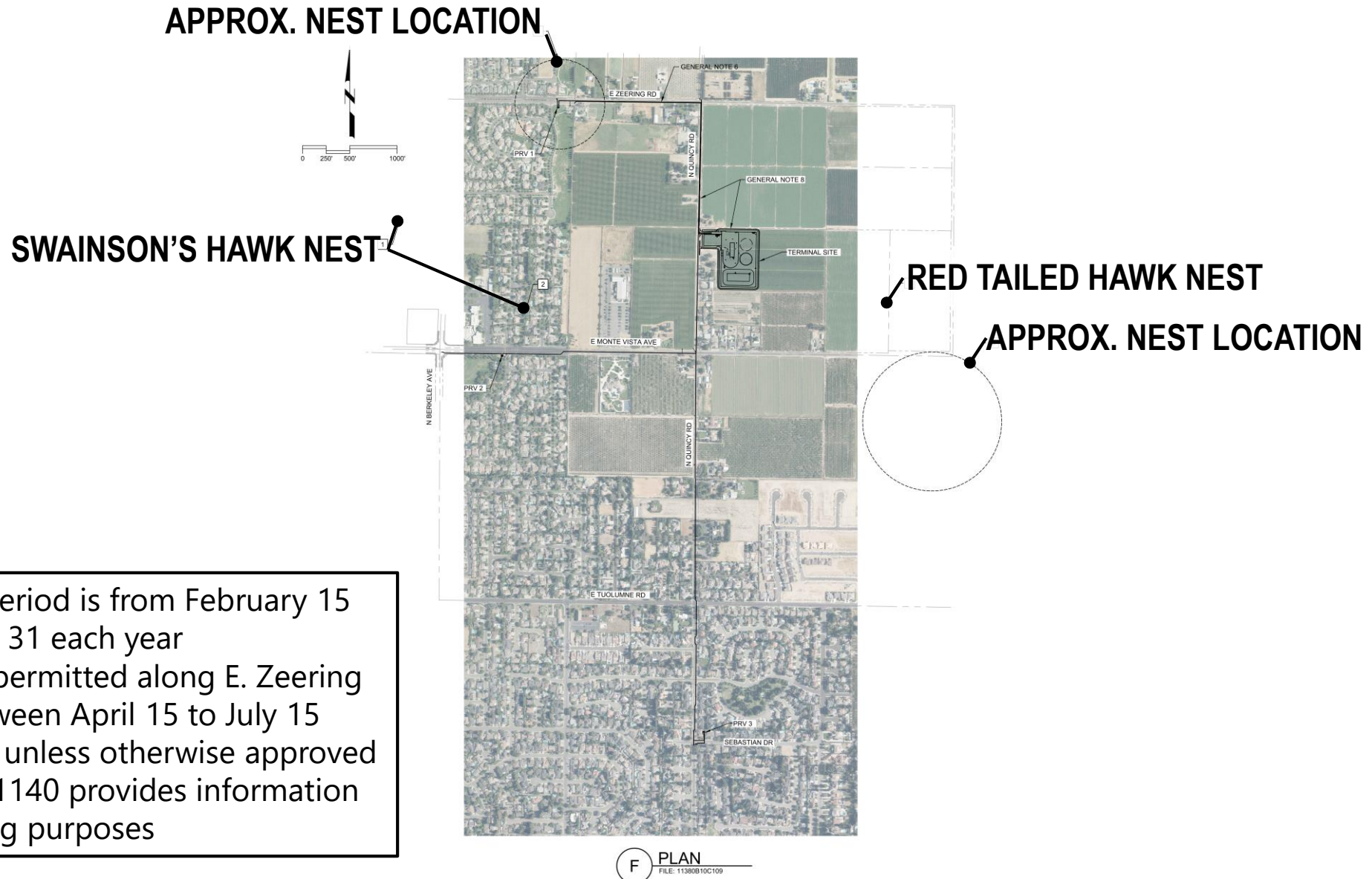
// Pressure reducing station overview



// Pressure reducing station 3D walk through

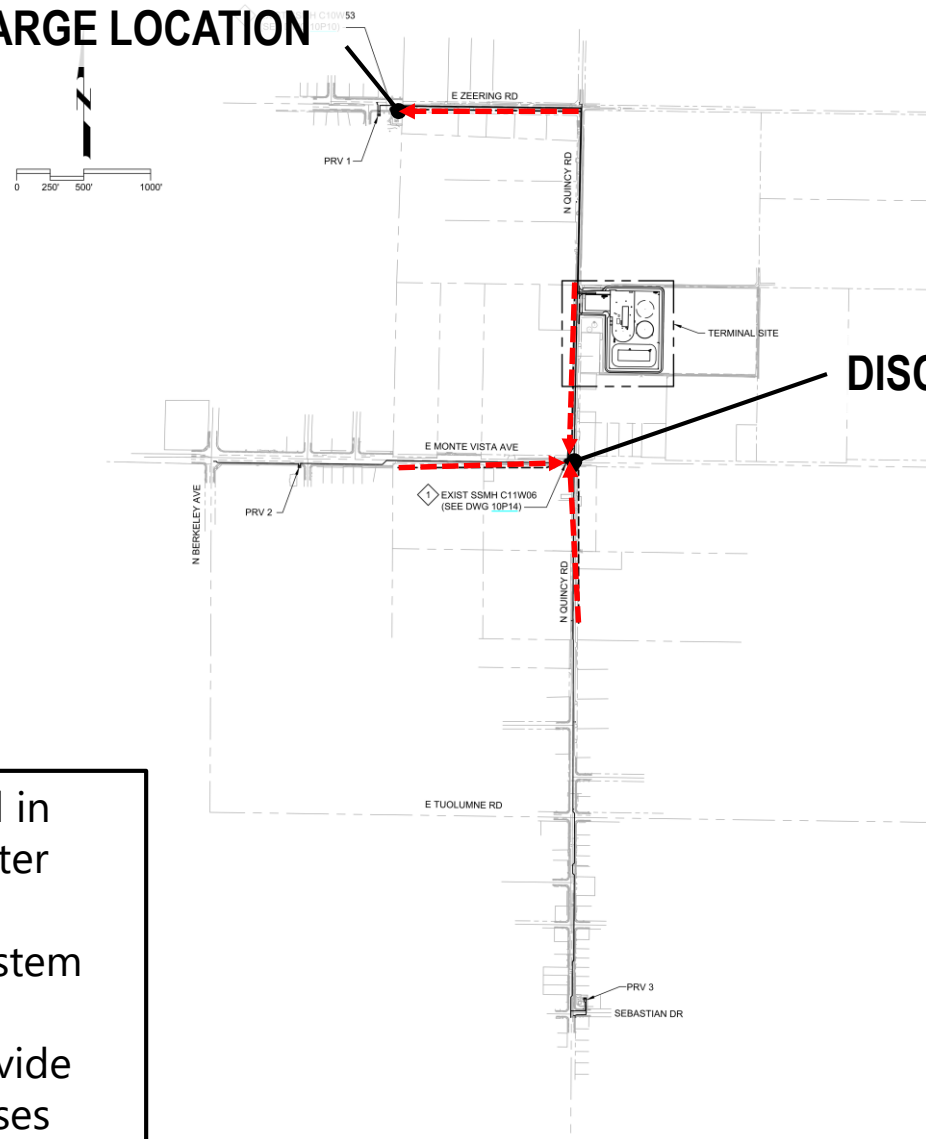


// Environmental restrictions



// Dewatering

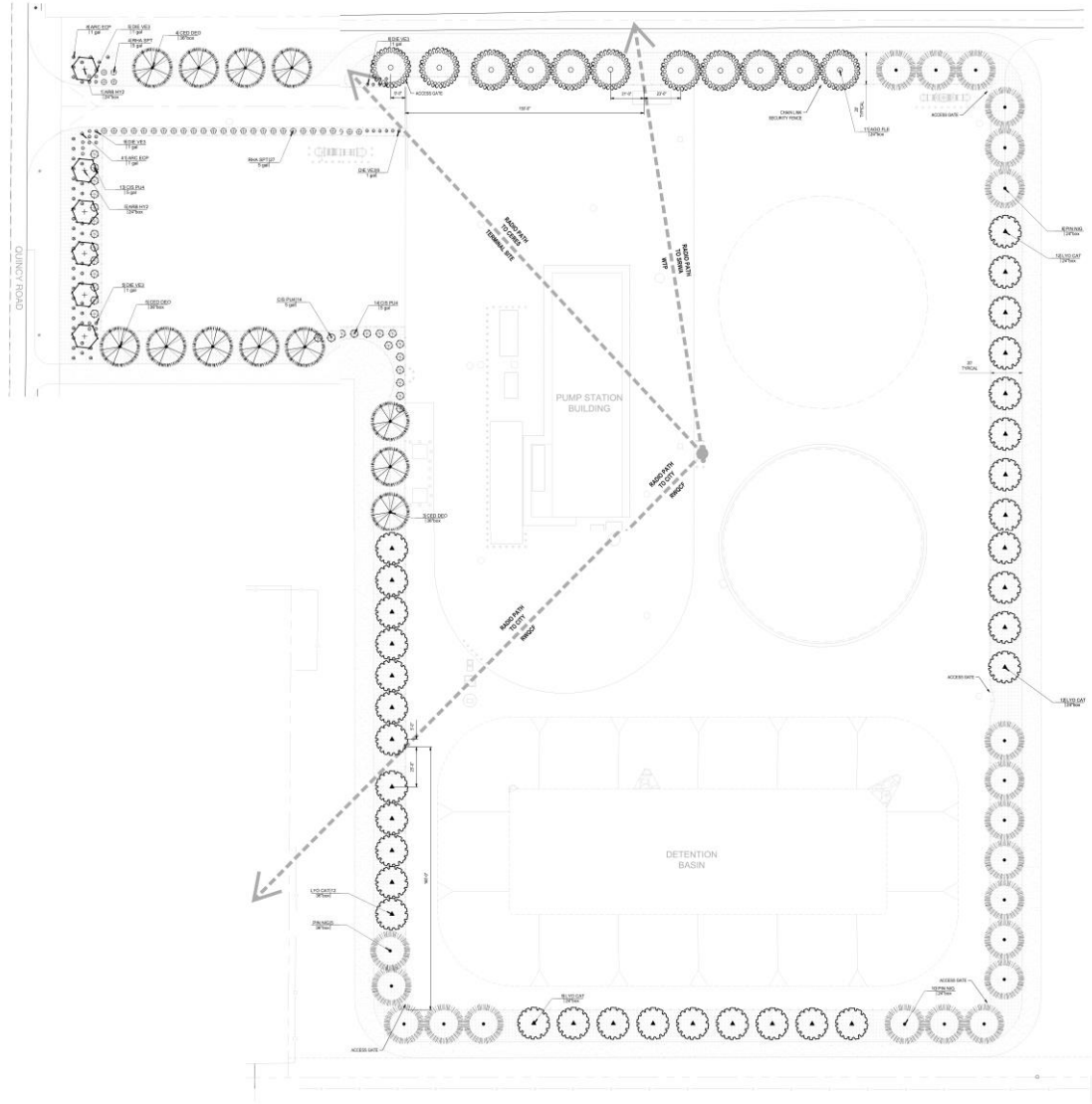
DISCHARGE LOCATION



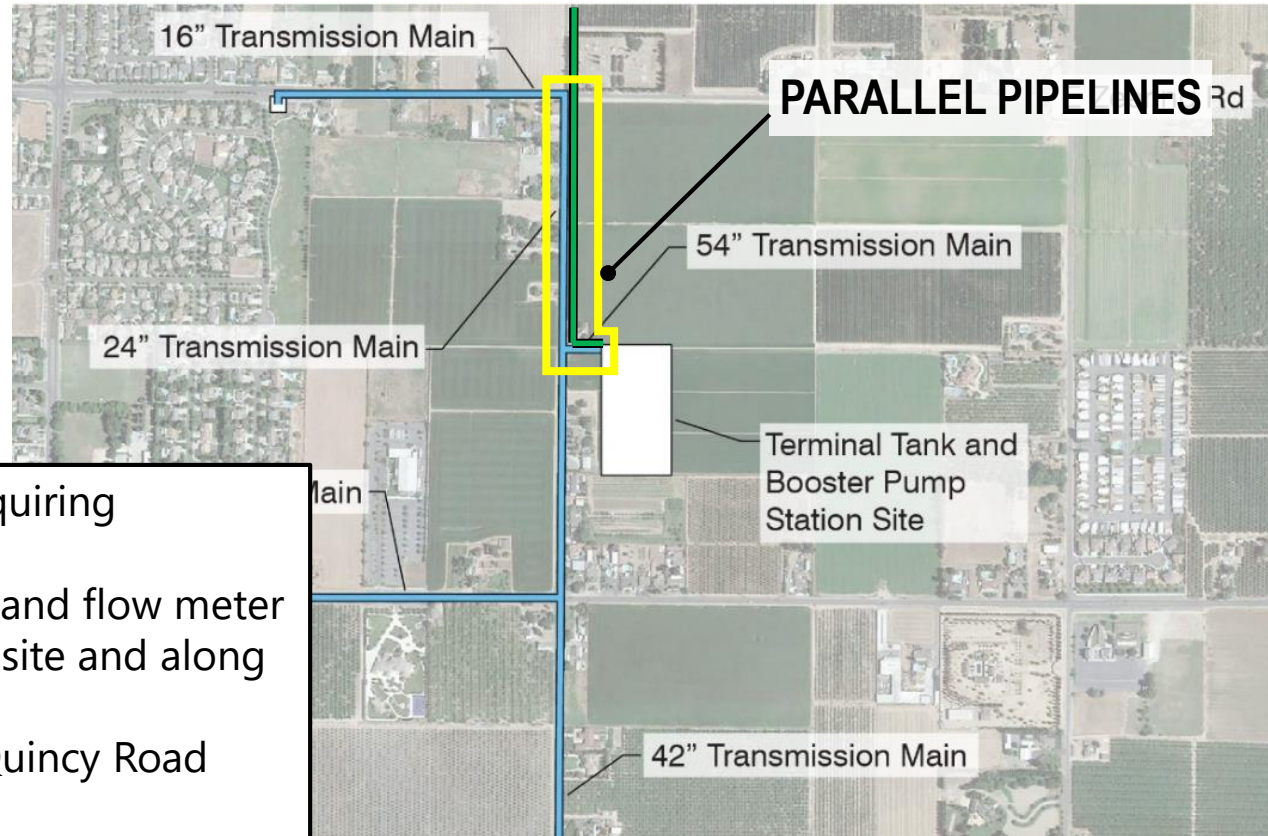
DISCHARGE LOCATION

- Geotechnical borings, included in appendices, include groundwater information
- Dewatering discharge to SS system allowed
- Sections 01140 and 02241 provide information for bidding purposes

// Landscaping

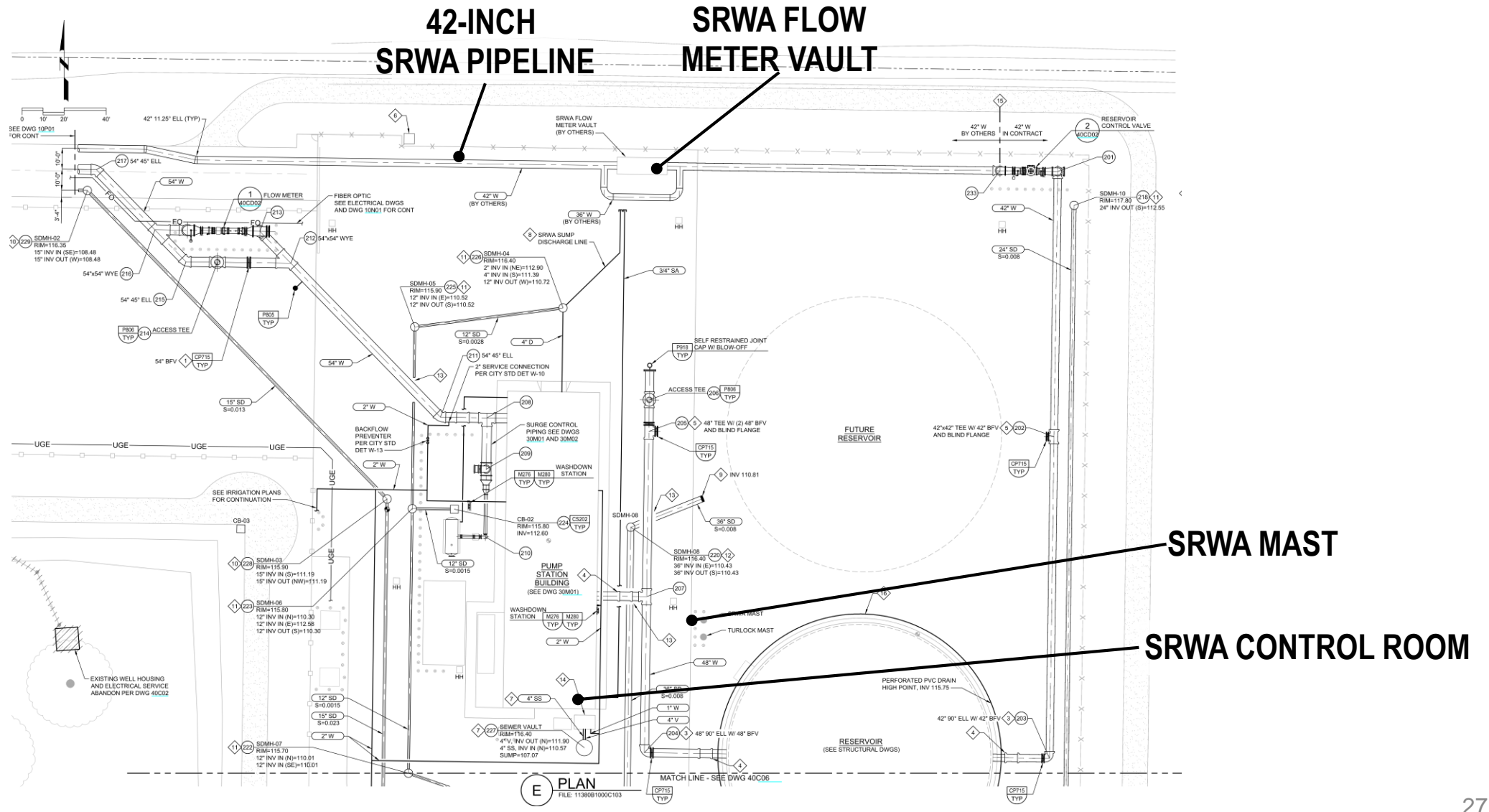


// SRWA Coordination

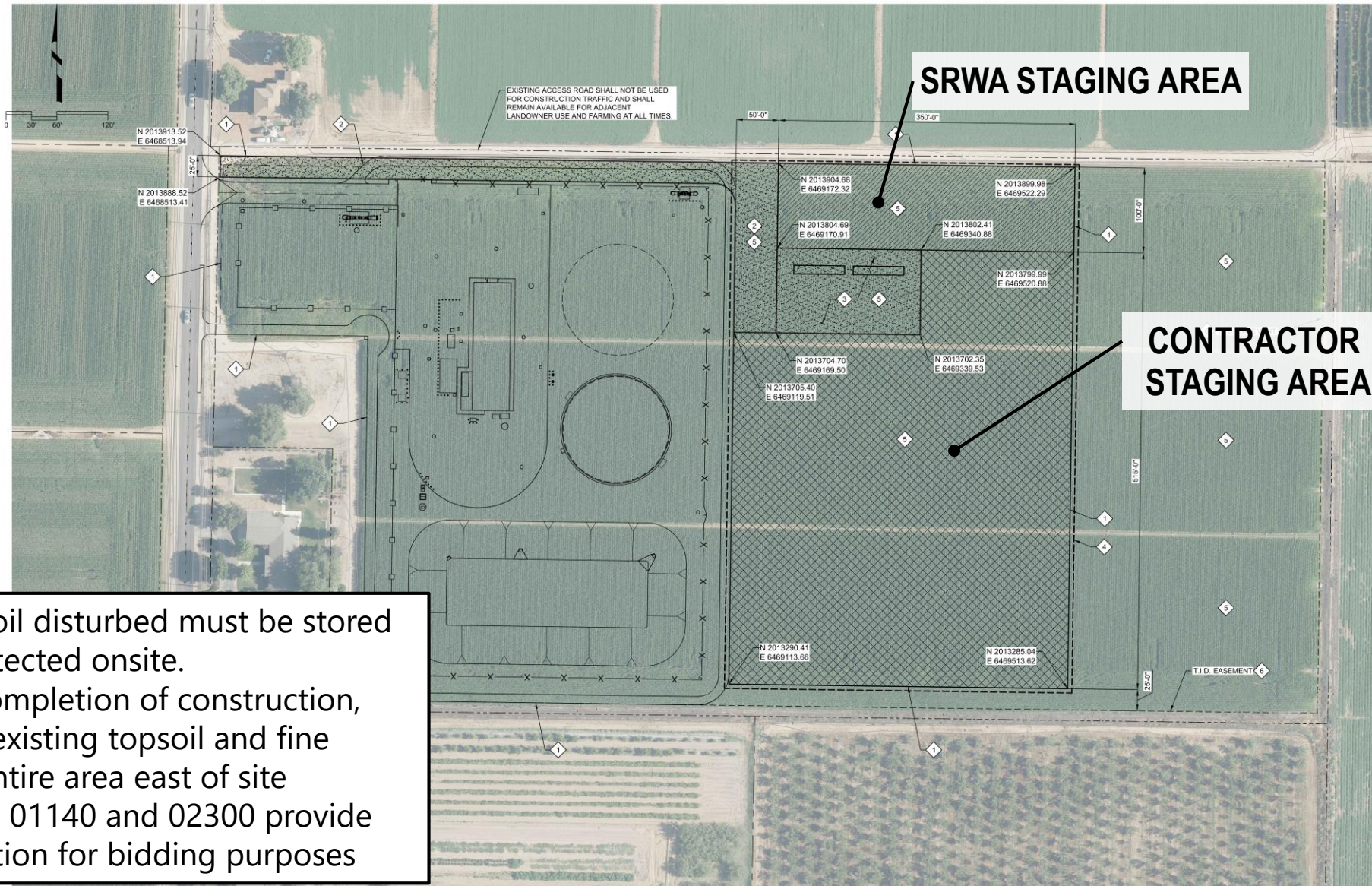


- Construction tasks requiring coordination include:
 - 42-inch pipeline and flow meter vault at terminal site and along Quincy Road
 - Final Paving of Quincy Road
 - Radio Tower
 - SRWA equipment in SRWA room
 - Testing of SRWA pump station
- Sections 01140 provides information for bidding purposes

// SRWA Coordination

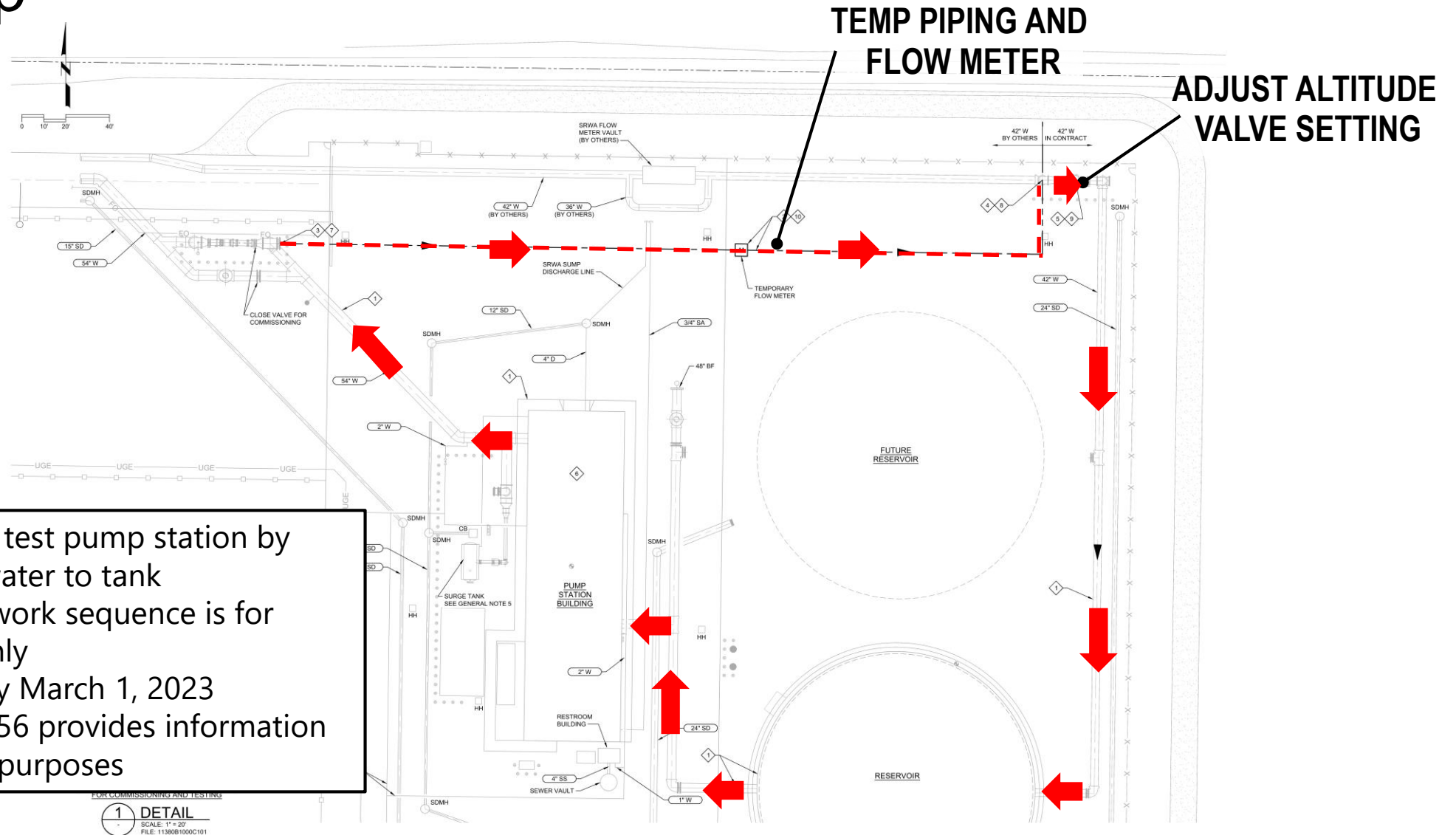


// Temporary staging and agricultural field restoration



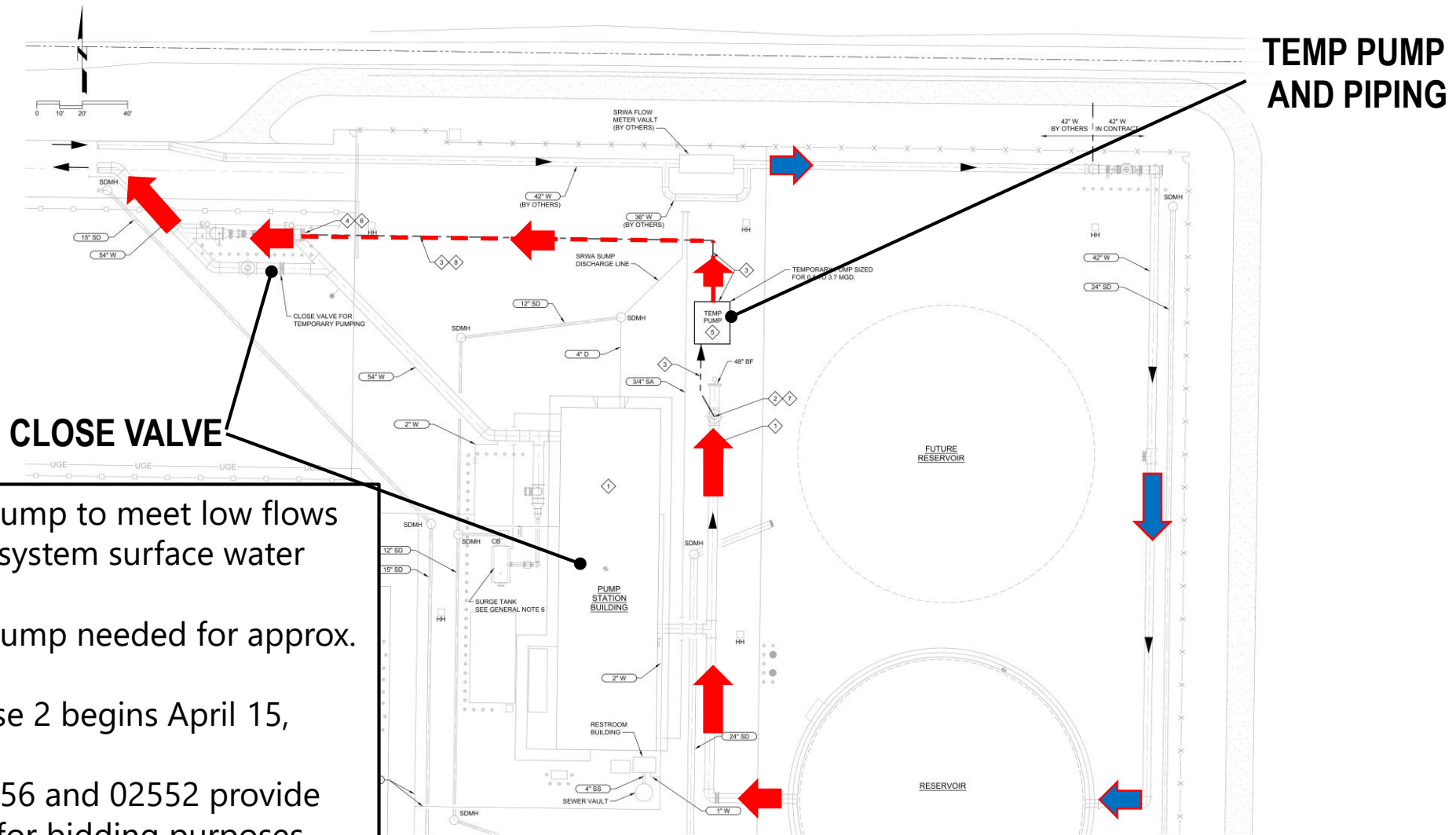
- All topsoil disturbed must be stored and protected onsite.
- Upon completion of construction, restore existing topsoil and fine grade entire area east of site
- Sections 01140 and 02300 provide information for bidding purposes

// Phase 1 commissioning: pump station and terminal tank startup



- Startup and test pump station by delivering water to tank
- Suggested work sequence is for guidance only
- Complete by March 1, 2023
- Section 01756 provides information for bidding purposes

// Phase 2 commissioning: temporary pumping to the distribution system



- Temporary pump to meet low flows required for system surface water integration
- Temporary pump needed for approx. 3 months
- Assume Phase 2 begins April 15, 2023
- Sections 01756 and 02552 provide information for bidding purposes

// Bid Form

- Base Bid:
 - Unit Price Bid
 - Allowances included in bid
- Bid Alternates:
 - 1) Eliminate future switchgear for pump station expansion
 - 2) Eliminate detention basin pump station, 15-inch storm drain pipeline, storm drain manholes and associated work
 - 3) Eliminate Phase 2 commissioning: temporary pumping to the distribution system and associated work
- Base bid used for award of contract (not Alternates)

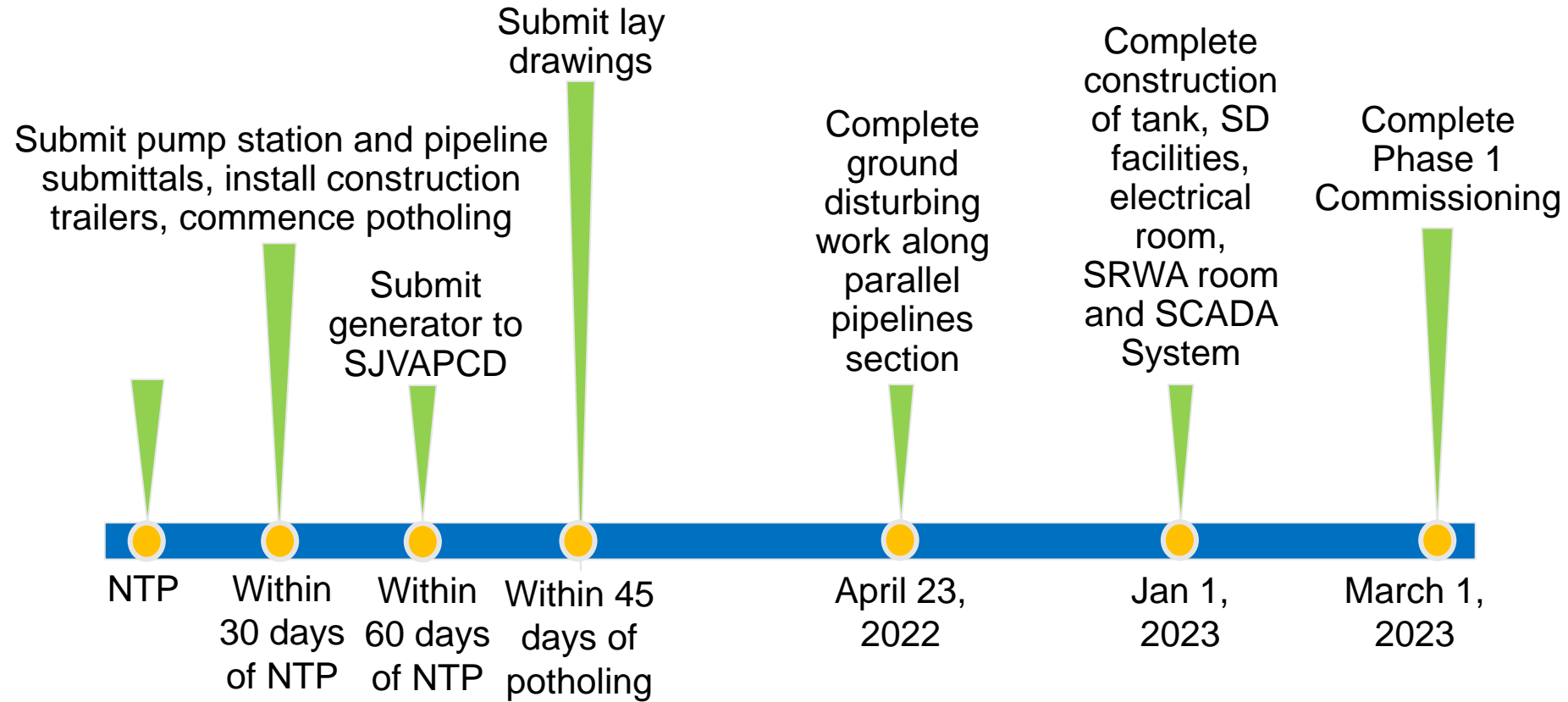
// Key bid information

- Required Qualifications:
 - Three or more reference projects with similar work.
 - Bidder and/or a proposed subcontractor has met the following:
 - One concrete tank greater than or equal to 1.5 MG in last 5 years
 - One potable water pump station with design flow rate of at least 7 mgd in last 5 years
 - One mile of potable water pressure pipeline 24-inches or larger in last 5 years
 - One similar project with a total construction cost of \$25 M in last 10 years
 - Reference projects substantially complete at bid opening

// Pump Pre-purchase

- City is pre-purchasing the three (3) horizontal split case pumps, motors and VFDs
- Contract will be assigned to Contractor
- Pre-purchase package will be attached to contract via Addendum
 - Payment to Contractor via change order

// Contract Times



// Contract Times

- Document 00520
- Milestones
 - Submit all submittals to start construction of the pump station within 30 days of NTP
 - Submit pipeline product data within 30 days of NTP
 - Install construction trailers within 30 days of NTP
 - Commence potholing within 30 days of NTP
 - Within 45 days of completing potholing, submit pipeline layout drawings
 - Submit generator to SJVAPCD within 60 days of NTP

// Contract Times

- Milestones
 - By April 23, 2022, complete all ground disturbing work along parallel pipelines section of work
 - By Jan 1, 2023, complete construction, testing and commissioning of:
 - Terminal tank and ancillary facilities
 - Electrical room in pump station building
 - SRWA control room
 - SCADA system
 - Storm drain basin, pump station and pipeline
 - By March 1, 2023, complete Phase 1 commissioning of the terminal tank and booster pump station
 - Substantially completed within 665 calendar days
 - Time of completion within 695 calendar days

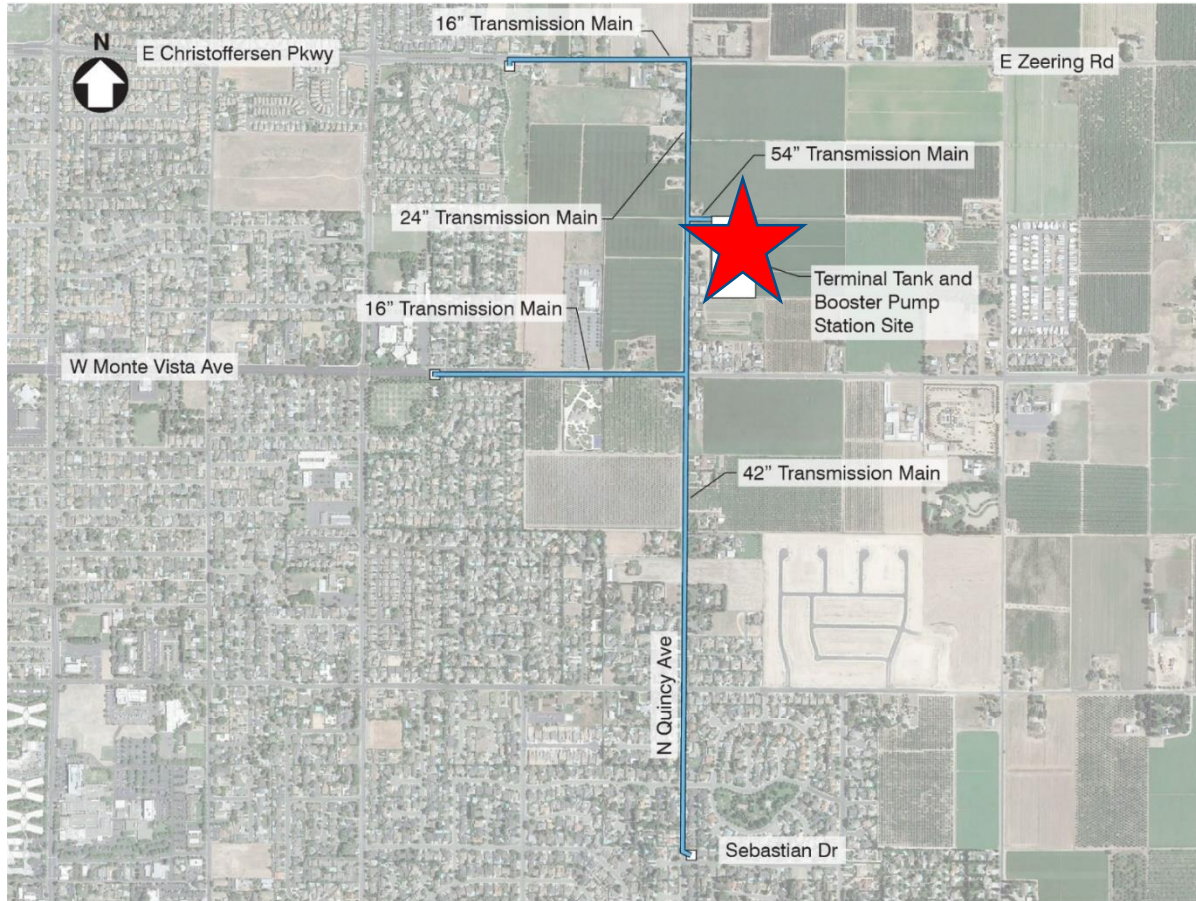
// Other contract document terms

- Liquidated damages
 - See Section 00520, 4.03
- Contractor to obtain permits and licenses not be obtained by the City
- See Section 01312 for required project meetings
- See Section 01305 for project partnering requirements
- See Section 00823 for escrow bid documents
- See Section 00822 for disputes review board requirements
- See Section 01140 for work restrictions

// Access to the site during bidding

- Areas not publicly accessible:
 - Request access from Stephen Fremming
 - To the extent the Owner has control over the Site, and schedule permitting, the Owner will provide Bidder access to the Site to conduct additional examinations
 - Owner will not have any obligation to grant such access
- Areas publicly accessible:
 - For more than visual examinations, request permission from agency that owns the right-of-way (Stanislaus County or City of Turlock) through an encroachment permit

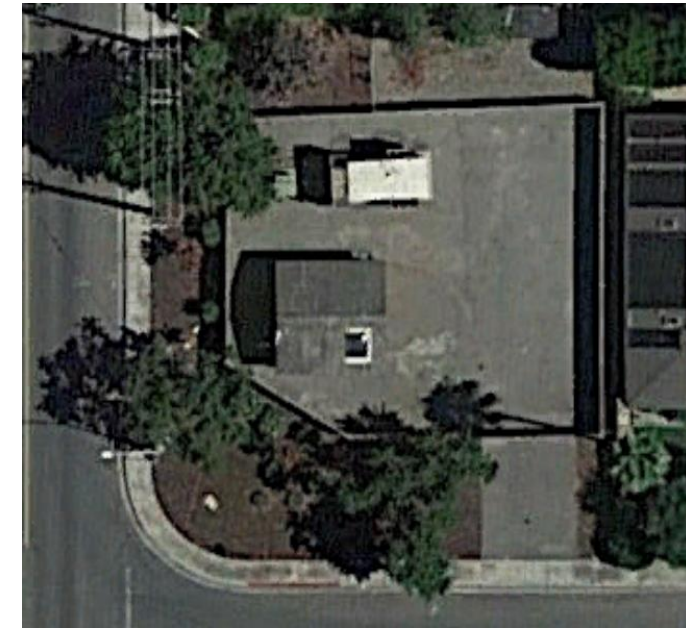
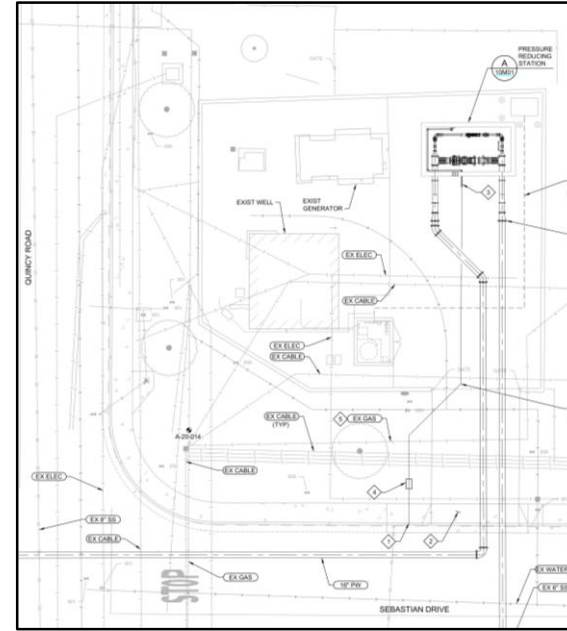
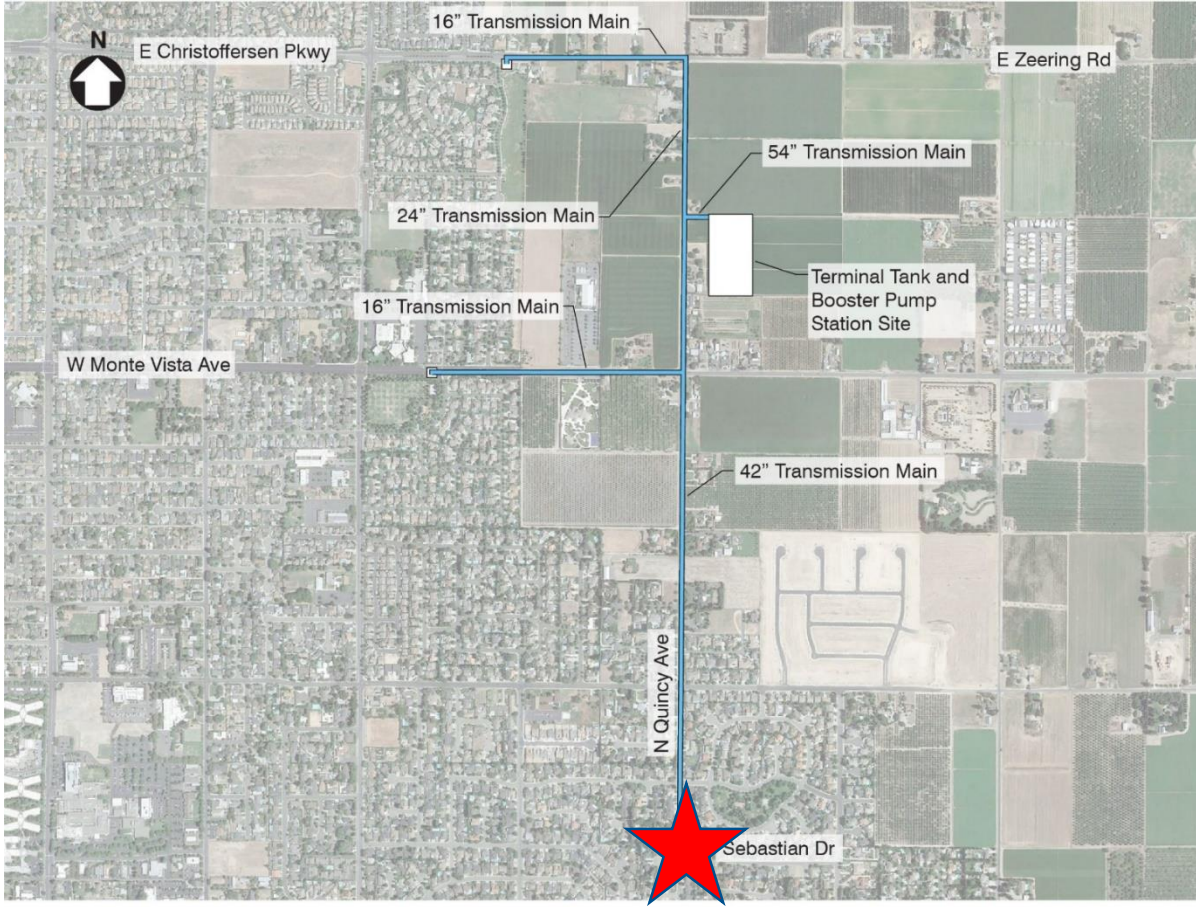
// Site visit – areas not publicly accessible



tur0521r1-11390.ai



// Site visit – areas not publicly accessible



// Mandatory pre-bid conference

- Contractor attendance record - name of attendee(s) and company
 - Read through registered list
 - Any others?

Questions

