



PUBLIC WORKS DEPARTMENT
ENGINEERING DIVISION
156 S. BROADWAY, SUITE 150
TURLOCK, CA 95380-5461

PHONE: (209) 668-5520
FAX: (209) 668-5563
TDD: (800) 735-2929
engineering@turlock.ca.us

Date: 05/23/23

City Project No.: 22-026

Addendum No.: 1

Plan holders:

Revisions to Plans and Specifications

The following additions, deletions or modifications shall become part of the Contract Documents:

Strikethrough text (~~text~~) indicates deletions. Bold Italicized text (***text***) indicates additions

Item No. 1:

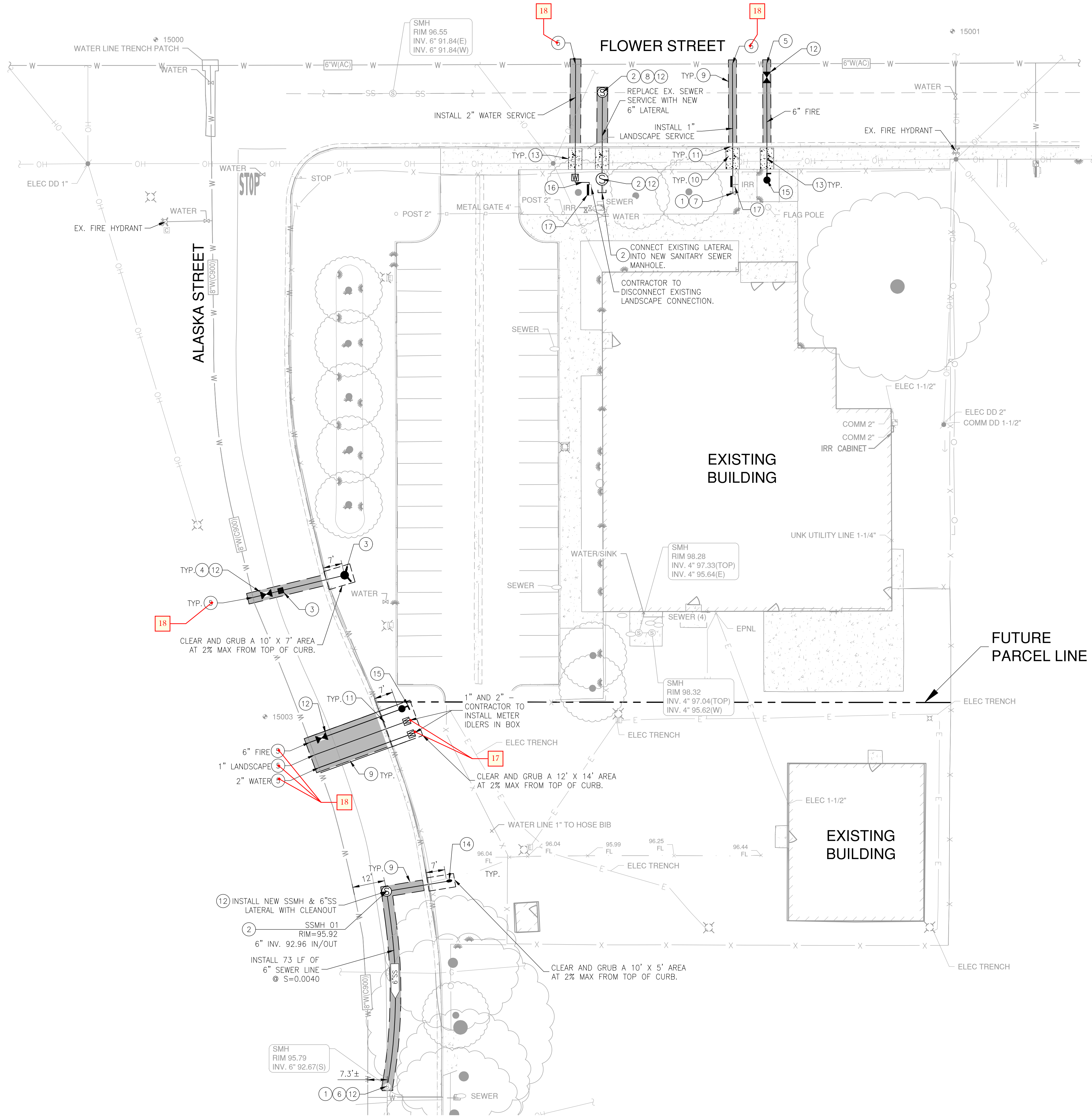
Update to the plans.

1. Remove and replace sheet C3.0 with the attached sheet.

If you have any questions, please call me at (209) 668-6029 or email at ccalvario@turlock.ca.us.

Sincerely,

Charlotte Calvario
Engineering Project Coordinator



CONSTRUCTION NOTES

- 1 PROTECT EXISTING UTILITY STRUCTURE IN PLACE
- 2 SANITARY SEWER MANHOLE PER CITY OF TURLOCK STANDARD DETAILS S-3, SEE SHEET C1.3.
- 3 INSTALL FIRE HYDRANT AND PAVEMENT BLUE MARKER PER CITY OF TURLOCK STANDARD DETAIL W-1 & W-3, SEE SHEET C1.3.
- 4 WATER VALVE PER CITY OF TURLOCK STANDARD DETAIL W-5, SEE SHEET C1.4.
- 5 CONNECT TO EXISTING WATER LINE. CONTRACTOR SHALL CUT IN A TEE. CITY TO INSTALL THE TEE AND VALVE. CONTRACTOR SHALL PROVIDE ALL MATERIALS.
- 6 CONNECT TO EXISTING SANITARY SEWER MANHOLE. NO EXISTING STUB. CHIP AWAY EXISTING CONCRETE. MORTAR NEW PIPE IN EXISTING MANHOLE.
- 7 CONNECT WATER SERVICE TO EXISTING WATER STRUCTURE.
- 8 CONNECT SEWER LINE/LATERAL TO EXISTING SEWER MAIN OR STRUCTURE.
- 9 PAVEMENT TRENCH PATCH PER CITY OF TURLOCK STANDARD DETAIL T-2, SEE SHEET C1.3.
- 10 CONCRETE DOWEL PER DETAIL 1, SEE SHEET C1.2.
- 11 CONTRACTOR TO GO UNDER EXISTING CURB AND GUTTER AND INSTALL NEW UTILITY LINE.
- 12 ADJUST EXISTING UTILITY STRUCTURE TO GRADE.
- 13 SIDEWALK PER CITY OF TURLOCK STANDARD DETAIL C-3, SEE SHEET C1.3. CONTRACTOR TO REPLACE FROM JOINT TO JOINT. ASSUME 5 FT WIDTH.
- 14 6" SEWER CLEANOUT PER CITY OF TURLOCK STANDARD DETAIL S-7, SEE SHEET C1.3.
- 15 INSTAL 6" FIRE LINE AND BLOWOFF WITHIN 75' OF FIRE HYDRANT PER CITY OF TURLOCK STANDARD DETAIL W-7, SEE SHEET C1.4.
- 16 INSTALL NEW WATER SERVICE 10 FEET AWAY FROM EXISTING SEWER LATERAL. INSTALL NEW BOX, METER, AND BACKFLOW. REMOVE EXISTING WATER SERVICE AND CORP STOP. CONNECT NEW SERVICE TO EXISTING SERVICE BEHIND THE NEW REDUCED PRESSURE VALVE WITH A DRESSER COUPLER. REMOVE EXISTING BOX AND BACKFLOW
- 17 INSTALL BACKFLOW PREVENTER PER CITY OF TURLOCK STANDARD DETAIL W-3, SEE SHEET C1.4

18) CONNECTION TO EXISTING WATER MAINS SHALL BE PERFORMED AS A HOT TAP USING A TAPPING SADDLE. PHYSICAL TAPPING SHALL BE PERFORMED BY CITY OF TURLOCK CREWS AND THEIR TAPPING MACHINE. ALL OTHER MATERIALS, EQUIPMENT, AND WORK, INCLUDING EXCAVATION, TRENCH PROTECTION, TAPPING SADDLE, PIPE, FITTINGS, TRENCH BACKFILL, AND PATCH PAVING SHALL BE PROVIDED BY CONTRACTOR.

NOTES

1. CONTRACTOR TO VERIFY EXACT LOCATION, DEPTH, AND SIZE OF EXISTING UTILITY LINE PRIOR TO CONSTRUCTION
2. SEE CITY OF TURLOCK STANDARD DETAIL W-4 ON SHEET C1.3 FOR THRUST BLOCK SCHEDULE

NOTICES

1. CALL UNDERGROUND SERVICE ALERT AT LEAST TWO WORKING DAYS NOTICE PRIOR TO EXCAVATING. DELINEATE THE AREA TO BE EXCAVATED BEFORE CALLING USA. DELINEATED AREAS SHOULD BE IDENTIFIED IN WHITE MARKINGS WITH THE REQUESTER'S COMPANY NAME OR LOGO WITHIN THE PRE-MARKED ZONES.
2. MAINTAIN A MINIMUM 3' SEPARATION BETWEEN JOINT TRENCH AND WET UTILITIES. SEPARATION IS MEASURED FROM THE CLOSEST EDGE OF THE JOINT TRENCH TO THE CLOSEST EDGE OF ANY WET FACILITY.

CONTRACTOR RESPONSIBILITIES

1. CONTRACTOR IS TO VERIFY ALL PROPOSED INSTALLATIONS, CONDITIONS, AND SPECIFICATIONS PRIOR TO COMMENCING WITH ANY PORTION OF WORK. ANY DISCREPANCIES, DELETIONS OR INCONSISTENCIES ARE TO BE REPORTED TO THE UTILITY COMPANY'S INSPECTOR BEFORE ORDERING MATERIAL OR COMMENCING WORK. THE CONTRACTOR SHALL COMPLY WITH ALL APPLICABLE SPECIFICATIONS. ANY UNAUTHORIZED VARIATION FROM PLANS OR SPECIFICATION WILL BE CORRECTED BY CONTRACTOR PRIOR TO INSTALLATION AT CONTRACTOR'S EXPENSE.
2. CONTRACTOR IS RESPONSIBLE FOR PROVIDING FINAL GRADE OF ALL VAULTS, ENCLOSURES, AND PADS. DOCUMENTATION OF ABSOLUTE ELEVATION FOR STRUCTURES TO BE PROVIDED TO THE UTILITY COMPANY'S INSPECTOR BY SURVEYOR AT TIME OF STAKING. ANY VARIANCE FROM SPECIFIED FINAL GRADE SHALL BE CORRECTED BY CONTRACTOR PRIOR TO INSTALLATION.
3. CONTRACTOR IS TO PROVIDE AND INSTALL ALL UNDERGROUND FACILITIES SHOWN ON THIS DRAWING IN ACCORDANCE WITH THE UTILITY COMPANY'S STANDARDS.
4. CONTRACTOR IS TO PROVIDE ALL TRENCHING, SHADING, BACKFILL, COMPACTION, AND RESTORATION.
5. CONTRACTOR TO OBTAIN ALL ENCROACHMENT PERMITS FROM CITY OF TURLOCK ENGINEERING DEPARTMENT.



NOTE:
ALL REFERENCES AND WRITTEN
DIMENSIONS SHALL SUPERCEDE
ALL SCALED DISTANCES AND
SHALL BE VERIFIED IN THE
FIELD. ANY DISCREPANCY SHALL
BE BROUGHT TO THE ATTENTION
OF THE ENGINEER PRIOR TO
THE COMMENCEMENT OF WORK.

M. Persak
MIKE PERSAK, P.E.
LIC#44908
4/19/2023
PLANS APPROVAL DATE



O'DELL
ENGINEERING
1165 Scenic Drive, Suite A
Modesto, CA 95350
odellengineering.com



CITY OF TURLOCK
DEVELOPMENT SERVICES
ENGINEERING DIVISION
156 S. BROADWAY, STE 150
(209) 668-5520

UTILITY PLAN
TURLOCK ARMORY UTILITY PLAN

VERIFY SCALE
BAR IS 1" ON
ORIGINAL DRAWING
1/4" 3/4" 1"
0 1/2"
IF NOT ONE INCH ON
THIS SHEET, ADJUST
SCALE
ACCORDINGLY

DRAWN BY: EH
REV. BY: MP
CH. BY: MP
DATE: 1/26/2023
SCALE:
O'DELL PROJECT NO.: 41270

SHEET

C3.0

OF 7