



Quarterly Report on Sales Tax and Business Activity

Top 25 Sales Tax Remitters

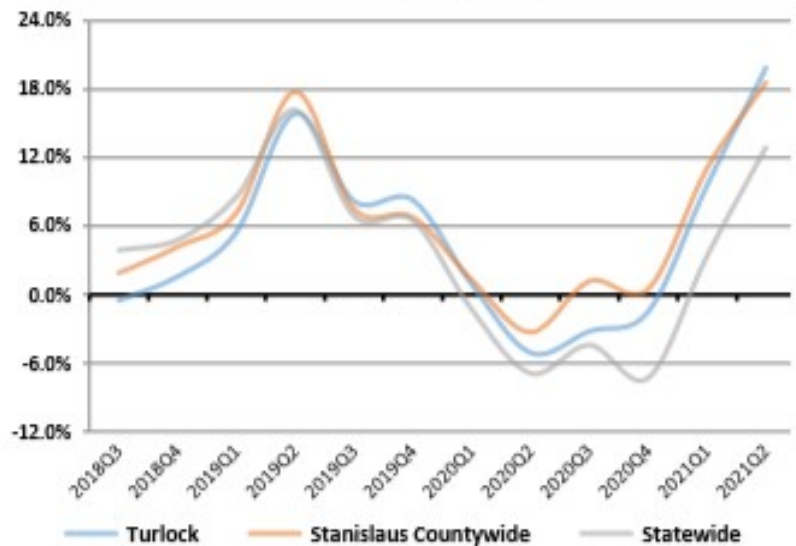
- ARCO AM/PM MINI MARTS
- BONANDER PONTIAC/BUICK/GMC
- CHEVRON SERVICE STATIONS
- COSTCO WHOLESALE
- DICK'S SPORTING GOODS
- FIRE HOUSE COOPERATIVE - MMD
- GARTON FORD TRACTOR
- HOME DEPOT
- INDEPENDENT ELECTRIC SUPPLY
- JKB ENERGY
- KOHL'S DEPARTMENT STORES
- LOWE'S HOME CENTERS
- MCDONALD'S RESTAURANTS
- N & S TURLOCK
- NELSON-JAMESON
- ROSS STORES
- SAVE MART SUPERMARKETS
- SHELL SERVICE STATIONS
- SMITH CHEVROLET
- TARGET STORES
- TJ MAXX
- TURLOCK CHRYSLER DODGE JEEP RAM
- UNITED RENTALS
- VALERO SERVICE STATIONS
- WAL MART STORES

2nd Quarter 2021 in Review

California sales tax cash receipts increased by 32.3% from the same quarter last year. In this jurisdiction sales tax cash receipts increased by 38.7% from the same quarter last year due to a increase of \$150,312,000 in Taxable Sales.

Cash Receipts	Quarter	Annual
Turlock	38.7%	19.9%
Stanislaus Countywide Pool	-5.7%	26.0%
Stanislaus Countywide	32.2%	18.6%
Central Valley Region	33.9%	23.6%
Statewide	32.3%	12.9%

Annualized Percent Change in Sales Tax Cash Receipts



Business Activity

	Turlock		Central Valley		California	
	Quarter	Annual	Quarter	Annual	Quarter	Annual
General Retail	53.9%	20.6%	42.1%	27.9%	53.5%	3.5%
Food Products	39.9%	3.9%	18.5%	-7.6%	42.7%	-14.0%
Transportation	51.1%	17.2%	23.4%	-5.4%	37.1%	-0.6%
Construction	9.1%	25.3%	6.7%	3.7%	7.9%	2.3%
Business To Business	28.9%	8.0%	20.0%	-3.4%	11.2%	-8.0%
TOTAL LOCAL BUSINESS ACTIVITY	39.7%	15.5%	26.0%	6.0%	32.9%	-3.5%
COUNTYWIDE POOL ACTIVITY	-1.1%	27.9%	20.3%	25.6%	7.4%	25.0%



City of Turlock



News

- Economic Activity:** Real Gross Domestic Product (GDP) grew at a seasonally adjusted annualized rate of 6.5% in the second quarter of 2021. Real GDP in Q2 2021 surpassed its Q4 2019 pre-pandemic peak by 0.8%. (Finance Bulletin, August 2021)
- Employment:** The U.S. unemployment rate fell by 0.7% to 5.2% in August of 2021 compared to July of 2021. Total U.S. nonfarm payroll employment increased by 235,000 (0.2%) in August compared to July of 2021. California's unemployment rate remained unchanged at June's revised rate of 7.6% for the month of July 2021. California's civilian employment increased by 56,000 (0.3%) in July of 2021 compared to June of 2021. (Finance Bulletin, August 2021 & BLS)
- Personal Income:** U.S. personal income increased by 2.7% in the Second quarter of 2021, compared to same quarter previous year. This increase was after a 5.2% growth in the first quarter of 2021. (BEA)

Turlock

Annual Per Capita Sales Tax
Adjusted for Inflation
(Constant 2017 \$)

